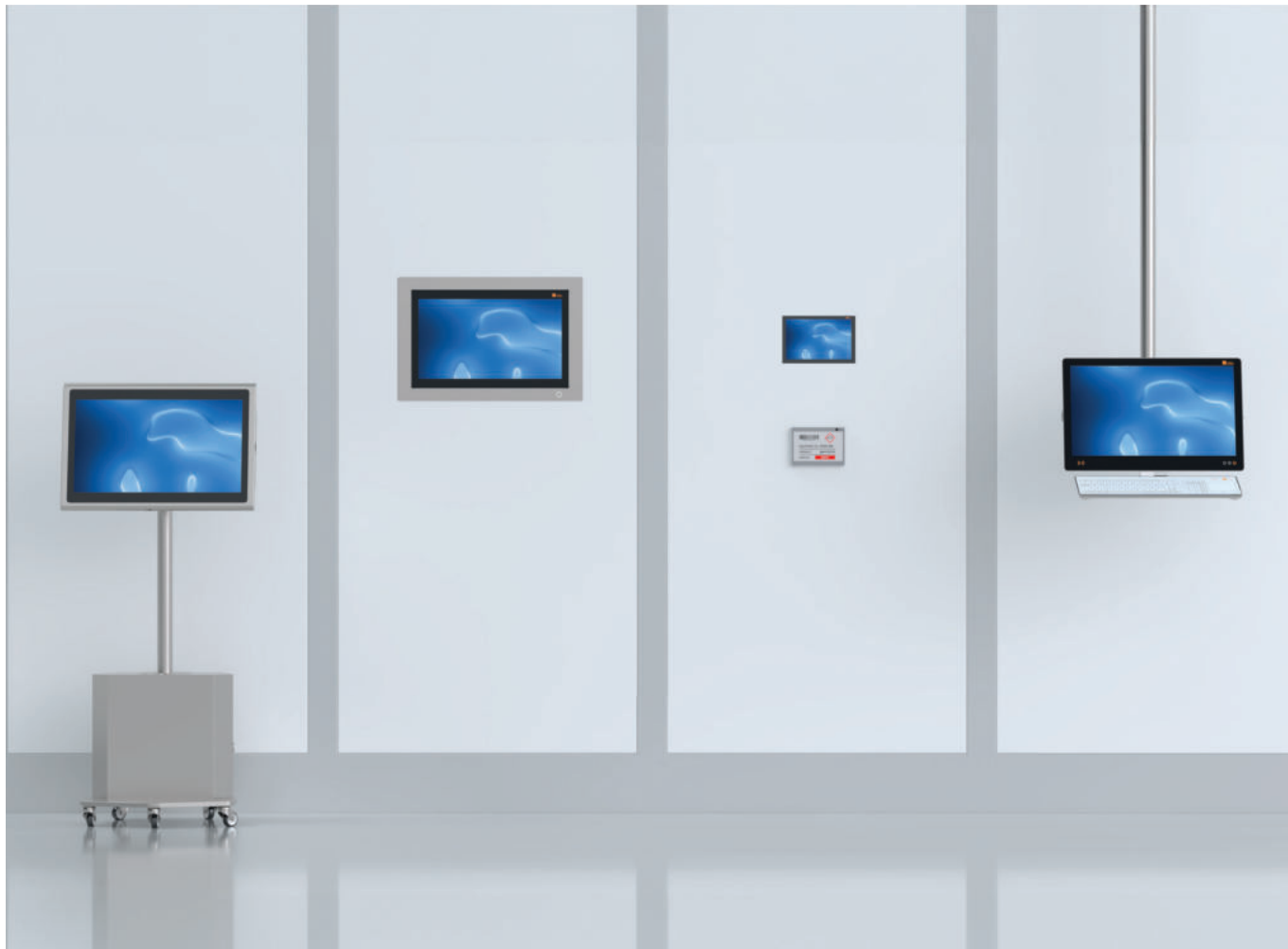


SYSTEC & SOLUTIONS PRODUCT CATALOG

LIFE SCIENCE READY®

BEST-IN-CLASS HMI SYSTEMS
FOR THE LIFE SCIENCES INDUSTRY



NO COMPROMISES

WE ENSURE THAT THE GLOBAL LIFE SCIENCES INDUSTRY CAN RESEARCH AND PRODUCE SUSTAINABLY AND SAFELY.

Meticulously designed IT solutions enhance efficiency and user-friendliness for seamless operation in demanding production environments. Our state-of-the-art HMI systems are crafted based on our extensive and in-depth knowledge of the specific production requirements for cleanrooms and the pharmaceutical industry. We understand the critical importance of maintaining stringent standards in these environments, and our systems are designed to not only meet but exceed these demands, ensuring seamless integration and user satisfaction.

**LIFE
SCIENCE
READY®**

Thanks to their unique combination of aesthetic design and innovative technology, our life science ready solutions provide state-of-the-art working environments in the life sciences industry, inspiring your team to achieve peak performance. Designed to enable sustainable, efficient, and competitive production.



Installation by experienced service technicians



FOR THE HIGHEST DEMANDS

Developed in accordance with GMP, FDA and ISO 14644 requirements, our systems are suitable for cleanroom classes A to D and hygienic production.



PLUG & PLAY

Our HMI systems are available for immediate use: quick and easy to install, requiring no structural modifications, saving you time and money.



EASY CLEANING

Hygienic cleanliness has never been easier. All our systems are designed for easy cleaning while being resistant to cleaning agents.



TAILORED FLEXIBILITY

Standardized or customized. Our modular product range offers solutions for all requirements in the life sciences industry.



COMPREHENSIVE CARE-FREE SERVICE

From consultation and project planning to configuration, commissioning, qualification and maintenance – all from a single source.



OUTSTANDING QUALITY

Your requirements and our experience form the basis for the continuous development of our HMI solutions – state-of-the-art technology for top quality.



GLOBAL NETWORK FOR YOU

Support where you need it. Our partner and service network is there for you all over the world.



DURABILITY & LONG-TERM AVAILABILITY

Our HMI solutions are designed for 24/7 operation in demanding environments, ensuring long-lasting and reliable IT service.

FOR REGULATED INDUSTRIES

WE ENSURE THAT YOUR WORK PROCESSES EASILY COMPLY WITH GMP STANDARDS.

Our HMI systems are employed wherever the highest standards must be met. All components and hardware construction are fully suitable for industrial use and designed to be user-friendly, thus preventing errors and enhancing process reliability.

Our systems are GMP- and HACCP-compliant, predominantly designed for protection class IP65 and higher. We adhere to all standards for cleaning, protection, and handling. For example, our multi-touch screens are usable with cleanroom gloves. The stainless steel housings resist cleaning agents and dust containing acids. Moreover, our glass keyboards can be fitted with a laminated polyester membrane for splinter-proof durability.



TROLLEY LIGHT trapezoid as a customer installation



PHARMACEUTICAL INDUSTRY

The stainless steel hardware solutions from Systec & Solutions are based on GMP guidelines, easy to clean and disinfect, and particularly suitable for use in cleanrooms in the pharmaceutical production sector.



COSMETICS INDUSTRY

Systec & Solutions GMP IT satisfies the requirements of protection class IP65 and is ideal for use in the production sector of the cosmetics industry.



FOOD INDUSTRY

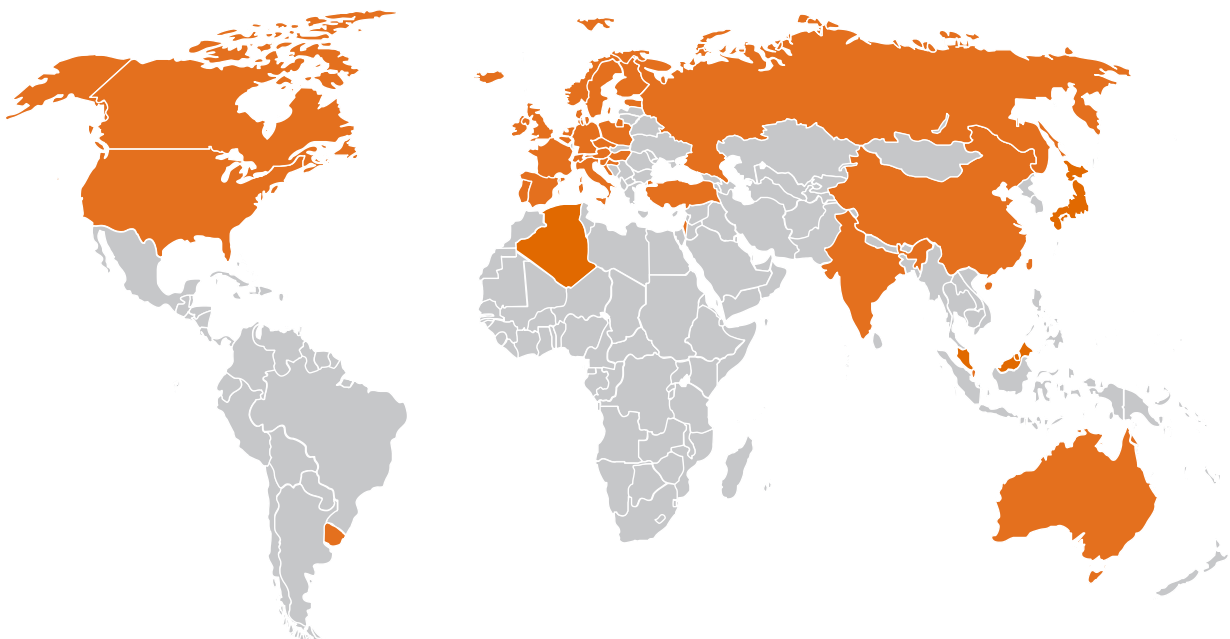
Fanless Systec & Solutions PC systems with industrial components in an IP65 stainless steel housing satisfy the hygiene requirements in the food and in particular the dairy processing industry.

OUR PRODUCTS ARE USED BY THE TOP 30 PHARMACEUTICAL COMPANIES.

The top pharmaceutical manufacturers from over 40 countries have placed their trust in us and our products for many years.

"The computer terminals in production have to meet the highest quality standards, especially with regard to hygiene and safety. After comparing several hardware manufacturers, Systec & Solutions was the obvious choice. As well as the quality of the equipment, we were impressed by the easy cleaning and disinfection, the performance of the computer units and the great service from the manufacturer."

Takeda Oranienburg – Germany



THE RIGHT SOLUTION FOR EVERY REQUIREMENT

01

HMI SYSTEMS

WAVE	10
PILOT	12
CONTROL	14
MODI	16
TABLET	18
LSL – LIFE SCIENCE LABEL	20
EX SOLUTIONS	22
STANDARD VERSIONS	24
ENDPOINT/THIN CLIENT SOLUTIONS	26

02

MOBILE WORKSTATION

TROLLEY LIGHT TRAPEZOID	30
TROLLEY LIGHT 5-STAR	32
TROLLEY LIGHT INDUCTIVE	34
TROLLEY SLIM	36
TROLLEY SLIM LAB	38
TROLLEY COMPACT	40
TROLLEY MAXI	42

03

FIXED INSTALLATIONS

ASSEMBLY SOLUTIONS	46
DESKTOP SOLUTIONS	48

04

ADD-ONS

CLEANROOM KEYBOARDS	52
ACCESSORIES FOR HMI SYSTEMS	54
AUTHENTICATION	56
SCANNERS & PRINTERS	58
PRINTERBOX	60
SCANNERBOX	61





HMI SYSTEMS

**LIFE
SCIENCE
READY®**

For the highest
demands



Can be operated
with gloves



Easy to clean and
resistant



Modular
combination



Ergonomic
design

WAVE

THE IDEAL HMI SYSTEM FOR CLEANROOMS AND GMP ENVIRONMENTS IN THE PHARMACEUTICAL INDUSTRY

Very easy-to-clean, cutting-edge technologies and state-of-the-art design – this is our WAVE HMI system. Housed in IP65 stainless steel, the WAVE HMI system can be thoroughly cleaned in a very short time using almost all cleaning agents and disinfectants. Equipped with a brilliant, bonded, non-reflective IPS LCD display, it is ideal for displaying MES software, ERP, and process control systems. The WAVE is also available in a large-screen version with a 55" display, suitable for displaying KPIs, among other applications.

MODEL VERSIONS

- Available in 21,5", 24", 27", 32" and 55"
- Configurable as PC, thin client or monitor
- 27", 32", 55" available in UHD resolution

COMPATIBLE WITH

- Keyboards
- Accessories
- Authentication

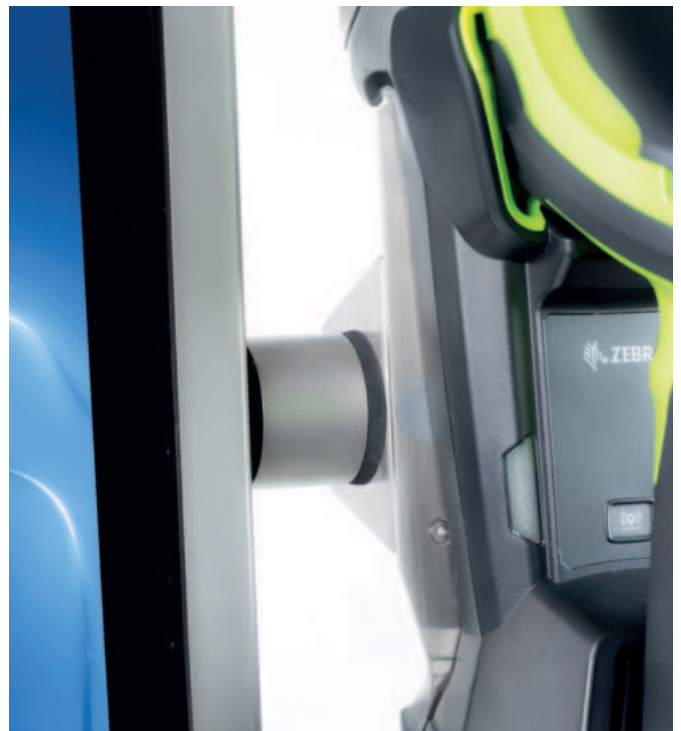


CLICK HINGE AND ACCESSORY CONNECTOR

Simplified installation of cleanroom keyboards thanks to CLICK HINGE technology. The accessory connector for side mounting of RFID readers, scanner cradle holders, etc. is also available on the WAVE.



WAVE with CLICK HINGE



WAVE with accessory connector



IDEAL FOR THE PHARMA- CEUTICAL INDUSTRY

Developed for GMP conditions and cleanroom classes A–D.



VERY EASY TO CLEAN

Easy to clean and resistant to cleaning agents thanks to sophisticated stainless steel construction.



APPEALING DESIGN AND FUNCTIONALITY

Designed for cleanrooms. Without beads, edges, or horizontal surfaces where dirt and dust accumulate.



INTUITIVE MULTI-TOUCH SCREEN

The touch screen can be operated wearing standard cleanroom gloves.

TECHNICAL DATA



For more information, scan the QR code or visit
<https://en-wave.systec.solutions>



WAVE in a wall-mounted version

PILOT

THE IDEAL HMI SYSTEM FOR HYGIENE REQUIREMENTS IN SPECIALIZED ENVIRONMENTS

Our PILOT HMI system is ideally suited for use in the food industry and similar applications. In addition, a laminated polyester membrane can be applied to reduce reflections and protect against glass splinters. The PILOT HMI system is optimally designed for special areas such as food production. MES software, ERP and process control systems can be displayed on the brilliant, optically bonded, anti-reflective IPS LCD display. The robust 1.4404 stainless steel housing with IP67 protection class and expandable controls also make the system ideal for machine manufacturers.



VERY EASY TO CLEAN

Easy to clean and resistant to cleaning agents. Constructed without beads or edges.



FOR SPECIALIZED DEMANDS

Sophisticated construction in 1.4404 stainless steel. Designed for use in damp and dusty environments.



FULLY ENCAPSULATED STAINLESS STEEL HOUSING

Reduces cleaning work and complies with protection class IP66/67.



INTUITIVE MULTI-TOUCH SCREEN WITH LOCK

The touch screen can be operated wearing standard cleanroom gloves. In addition, the screen can be locked with the Lock function.



PILOT desk mounted



PILOT bench mounted



PILOT with KEYBOARD TNG

MODEL VERSIONS

- Available in 18,5" and 23,8"
- Configurable as PC, thin client or monitor

CLICK HINGE AND ACCESSORY CONNECTOR

Simplified installation of cleanroom keyboards and using CLICK HINGE technology. The accessory connector for side mounting of RFID readers, scanner cradles, etc. is also available for the PILOT.

COMPATIBLE WITH

- Keyboards
- Accessories
- Authentication



TECHNICAL DATA



For more information, scan the QR code or visit <https://en-pilot.systemec.solutions>

CONTROL

INTEGRAL PANEL FOR OPTIMIZED INTEGRATION INTO WALLS IN CLEANROOMS AND GMP ENVIRONMENTS

The CONTROL HMI system is a space-saving and easy to clean solution. It is notable for its shallow installation depth. Every installation version conforms to IP65 on the front. The display provides high color accuracy, distinct color presentation and extremely low dependency on viewing angles. It provides an ideal display for MES software, ERP, and process control systems. An optional IP65 stainless steel protective liner, which is installed between the display and the wall, can be added. This ensures the retention of the cleanroom status after the panel has been removed.



IDEAL FOR CONFINED SPACES

Low installation depth and flat design provide full functionality with minimum space requirements.



INTUITIVE MULTI-TOUCH DISPLAY

The IPS LCD display with optical bonding can be operated with standard cleanroom gloves.



NUMEROUS INSTALLATION OPTIONS

Can be integrated into walls, machines or switch cabinets from the front or rear.

COMPATIBLE WITH

- Keyboards
- Authentication



MODEL VERSIONS

- Available as 17", 21", 24" and 32"
- Configurable as PC, thin client or monitor

TECHNICAL DATA



For more information, scan the QR code or visit <https://en-control.systec.solutions>



EASY CLICK MAGNETIC MOUNT



CONTROL

EASY CLICK MAGNETIC MOUNT

Easy & safe! The magnetic mount of the HMI system offers outstanding advantages during assembly.

BASE | FLUSH MOUNTING

Particularly easy to clean. Meets IP65¹ on the front.

OPTION 1 | FRONTFRAME²

Particularly flexible mounting and very easy to clean. Meets IP65¹ on the front.

OPTION 2 | PROTECTIVE ENCLOSURE

Provides optimal cable management and also maintains cleanroom status at the rear. Requires rear access during assembly. Meets IP65¹ on the front.

¹ With proper sealing.

² A frontframe may be necessary depending on the specified circumstances. We are happy to advise you.

MODI

THE IoT HMI SYSTEM FOR ROOM INFORMATION DISPLAY/ BUILDING AUTOMATION IN GMP ENVIRONMENTS

All information about the room and production status in digital form at a glance – that is what the intelligent, energy-efficient, network-capable MODI IoT HMI system offers. It is also ideal as a GMP-compliant panel for building automation. MODI can be integrated into a network via Ethernet or WiFi. The required display data can be displayed directly on the MODI from the network, using a browser or your own applications. It features different power supply options such as an integrated power supply unit or PoE (Power over Ethernet).



MAGNETIC INSTALLATION METHOD

Specially developed magnetic installation method allows for an easy installation and removal.



VERY EASY TO CLEAN

Whether flush-mounted or with a stainless steel frame, the system is easy to clean and IP65 rated on the front.



INTUITIVE MULTI-TOUCH DISPLAY

The IPS LCD display with optical bonding can be operated with standard cleanroom gloves.

MODEL VERSIONS

- Available in 7" and 10"
- Configurable as IoT PC, remote display or monitor

COMPATIBLE WITH



TECHNICAL DATA



For more information, scan the QR code or visit
<https://en-modi.systec.solutions>

LSR.SIGNAGE



LSR.signage is the perfect software for MODI,
for more information, scan the QR code or visit
<https://www.systec-solutions.com/en/software>



MODI as surface-mounted display



Flush-mounted MODI

EASY CLICK MAGNETIC MOUNT

Easy & safe! The magnetic mount of the HMI system offers outstanding advantages during assembly.

BASE | FLUSH MOUNTING

Particularly easy to clean. Meets IP65¹ on the front.

OPTION 1 | FRONTFRAME²

Particularly flexible mounting and very easy to clean. Meets IP65¹ on the front.

OPTION 2 | PROTECTIVE ENCLOSURE

Provides optimal cable management and also maintains cleanroom status at the rear. Requires rear access during assembly. Meets IP65¹ on the front.

¹ With proper sealing.

² A frontframe may be necessary depending on the specified circumstances. We are happy to advise you..

TABLET

GMP CLEANROOM TABLET – MOBILE WORK WITH A TABLET IN STAINLESS STEEL HOUSING

All tablets are equipped with an IP65 On/Off button and volume buttons as well as a protective glass panel that protects the multi-touch display. The flush-mounted CLEANROOM CONNECTOR is an easy-to-clean IP65 magnetic charging contact, enabling cleanroom-compliant charging with a special USB-C cable. Optionally, it can also serve as a USB-A socket using a data cable, for example, to connect a USB stick or Ethernet adapter.



VERY EASY TO CLEAN

Easy to clean and resistant to cleaning agents thanks to sophisticated stainless steel construction.



CLEANROOM CONNECTOR

Flush-mounted IP65 magnetic charging contact for cleanroom-compliant charging and data transmission.



UNRESTRICTED MOBILITY

For use anywhere at any time. Users can move freely thanks to the handy size, WiFi and battery.



INTUITIVE OPERATION

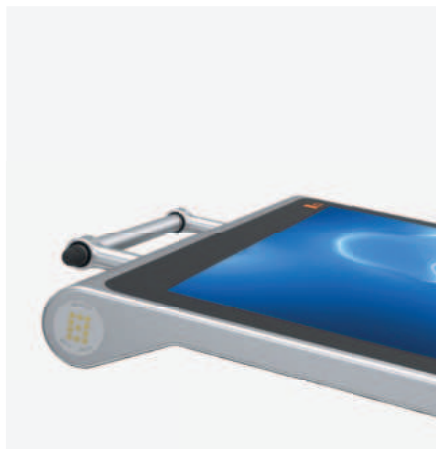
Easy to operate using the capacitive multi-touch display with cleanroom gloves or a cleanroom touch pen.



Tablet with DOCKING HINGE on the wall

TABLET DOCKING HINGE

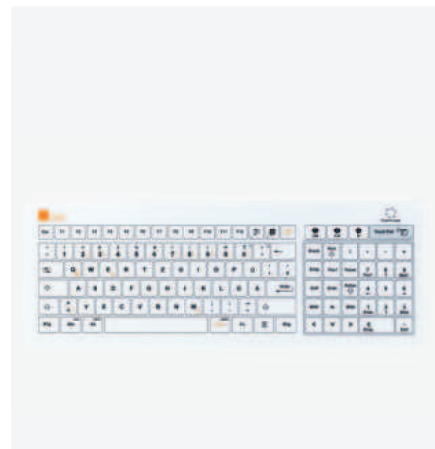
The stainless steel construction is suitable for wall mounting and is used to store and charge the TABLET via the magnetic CLEANROOM CONNECTOR.



CLEANROOM CONNECTOR for cleanroom-compliant charging and data transfer



Surface Pro with pen handle



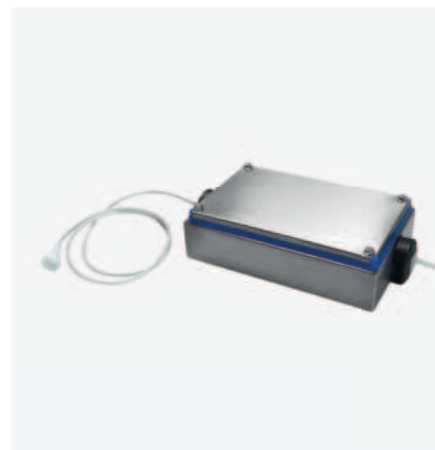
Easy-to-clean MEDICAL KEYBOARD for medical environments



Optional stainless steel holder for support arm systems, table or wall



Stainless steel grab handle for better ergonomics



Power supply unit in IP65 stainless steel box



Tablet with CONNECT BOX

COMPATIBLE WITH

- TROLLEY SLIM
- TROLLEY SLIM LAB

MODEL VERSIONS

- Tablet with Microsoft Surface Pro (13")
- Tablet with Apple iPad Pro* (11")

TECHNICAL DATA



For more information, scan the QR code or visit
<https://en-tablet.systec.solutions>

LSL – LIFE SCIENCE LABEL

E-PAPER-BASED LABELS FOR THE LIFE SCIENCES INDUSTRY

LSL is particularly suitable for visualizing status information such as identifying mobile equipment, containers, etc. It enables the display of labels and QR codes instead of conventional stickers or prints. Thanks to the integrated multicolor LED, the system can be used to localize equipment in the production area.

Life Science Label can be managed with the software LSR.signage. It is limited to the colors black, white, and red and has a fixed resolution. As a battery-operated system, it utilizes e-paper technology and offers a service life of up to 5 years. Its energy-efficient mode of operation, which only consumes energy when the displayed content changes, makes it ideal for static information.

The system offers various mounting and installation options, from adhesive mounting to magnetic mounting. Although it is made from plastic, it nevertheless meets the requirements for cleanrooms and is IP65-cleanable. LSL replaces traditional paper-based signage and communicates wirelessly via the ISM band with a dedicated receiving station. This ensures a greater range and lower energy consumption compared to other systems.

Flexible for any kind of validated data source and perfect to retrofit.

ADVANTAGES

- Power efficient
- Visualize static information
- Pharma 4.0 and paperless production
- Visualize information from a validated data source
- Flexible and custom made templates for the content

LSR.SIGNAGE



LSR.signage is the perfect software for LSL, for more information, scan the QR code or visit <https://www.systec-solutions.com/en/software>



LIFE SCIENCE LABEL front view



LIFE SCIENCE LABEL back view



VERY EASY TO CLEAN

Easy to clean and resistant to cleaning agents. Constructed without beads or edges.



IP65

Full protection against dust and liquids.



PLUG & PLAY

Quick, inexpensive and simple installation without the need for structural modifications.

MODEL VERSIONS

- Available as 4.3", 7" and in other dimensions
- Empowered by LSR.signage

TECHNICAL DATA



For more information, scan the QR code or visit <https://www.systec-solutions.com/en/hmi-systems/lsl-life-science-label>



LIFE SCIENCE LABEL display options

EX SOLUTIONS

FOR GREATER SAFETY IN POTENTIALLY EXPLOSIVE ATMOSPHERES

Because safety has the highest priority in potentially explosive atmospheres, we offer selected HMI systems for EX areas. The HMI systems are available as a remote monitor or panel PC. Optionally, they can be enhanced with a keyboard featuring ergonomic finger placement. The capacitive touch screen with TFT display enables decentralized information to be displayed and processing directly on-site during operations.



MULTI-TOUCH DISPLAY

Easy to operate using the capacitive multitouch display or a keyboard. Depending on the model there are also other solutions.



FULLY ENCAPSULATED STAINLESS STEEL HOUSING

Reduces cleaning work and complies with protection class IP66/67.



FOR EXPLOSIVE AREAS

Designed for use in zone 2/22; Class I/ Div II – certification for zone 2/22, class I div II in pending. Depending on the model there are also other solutions.

MODEL VERSIONS

- Available in 18,5" and 23, other sizes for zone 1/21 on request.
- Configurable as PC, thin client or monitor.

TECHNICAL DATA



For more information, scan the QR code or visit

<https://www.systec-solutions.com/en/hmi-systems/ex-solutions>



EX solution designed for use in zone 2/22; Class I/ Div II – certification for zone 2/22, class I div II in pending.

STANDARD VERSIONS

SAVE TIME AND MONEY WITH PRECONFIGURED SYSTEMS

We have put together four standard versions of our HMI systems, based on our over 30 years of experience in customer projects within the GMP sector. These versions are precisely tailored to meet the specific requirements of your primary application, allowing you to quickly identify the ideal system for your needs and unlock numerous benefits.

THREE SIMPLE STEPS ARE ALL IT TAKES

- | | | |
|--|--|--|
| <p>1 REQUIREMENTS</p> <p>Ideally, you already have an overview of the different versions we provide and let us know your thoughts in an initial discussion.</p> | <p>2 CONSULTING</p> <p>We discuss the possibilities offered by each version to find the ideal solution for you.</p> | <p>3 BENEFITS</p> <p>Our versions consist of standard components, meaning you benefit from fast processing times and lower costs.</p> |
|--|--|--|

TECHNICAL DATA



For more information, scan the QR code or visit

<https://en-hmi-std.systec.solutions>



ENDPOINT

For virtualized server-based solutions via Microsoft TSE/RDP, Citrix, etc.

BENEFITS



Ideal for use with IGEL OS (IGEL Ready), ThinManager (ThinManager Ready) or similar endpoint solutions.



The perfect solution for high-performance work with virtualized applications in the cleanroom.



For use as an MES/DCS system, KPI/status displays or cloud applications (e.g. Microsoft Azure).

Available for the following products:

WAVE | PILOT | CONTROL

ALLROUND

Meets all the requirements of an MES system in the life science environment.

BENEFITS



Fat client/PC solution for Windows applications, expandable with extensive interfaces and bundles.



All applications are based on Windows 10 or 11 with the required interfaces. RFID/NFC authentication solutions (optional CONNECT BOX required).



For use as a MES/DCS system, for KPI/status displays, or cloud applications (e.g. Microsoft Azure).

Available for the following products:

WAVE | PILOT | CONTROL

PERFORMANCE

Meets all the requirements for an MES system in the life science sector

BENEFITS



Fat client/PC solution for Windows 10 or 11 applications; can be expanded with extensive interfaces and bundles.



All applications are based on Windows 10 or 11 with the required interfaces. RFID/NFC authentication solutions (optional CONNECT BOX required).



The best equipment/performance ratio for an HMI system based on Windows 10 or 11.

Available for the following products:

WAVE | PILOT | CONTROL

CUSTOM



Can't find the right PC configuration for your requirements? Don't worry, we can always offer you a customized solution. Our HMI systems are optionally available with features such as loudspeakers, an emergency shut-off function, and function keys, as well as customer-specific interfaces. We are happy to advise you.



ENDPOINT/THIN CLIENT SYSTEMS

EASY AND CENTRAL REMOTE ADMINISTRATION – LOW-COST AND LOW-MAINTENANCE

The Endpoint/Thin client solution based on software (IGEL OS, ThinManager, etc.) offers a comprehensive alternative to traditional thin-client hardware. It functions as a powerful, software-based, multi-purpose thin client for secure and reliable access to diverse IT infrastructures. The solution supports robust graphical capabilities for connecting to server systems like Microsoft TSE (RDP, ICA protocol, and VDI), VNC, and many other protocols depending on the Endpoint/Thin client solution. USB devices such as keyboards, mice, scanners, printers, and touch screens are compatible. Additionally, the software supports WLAN, Bluetooth, RFID, NFC, smart card readers, audio, etc.



NO LOCAL SOFTWARE AND MAINTENANCE REQUIRED

Ready for use in just a few clicks. Central remote maintenance by IT is possible.



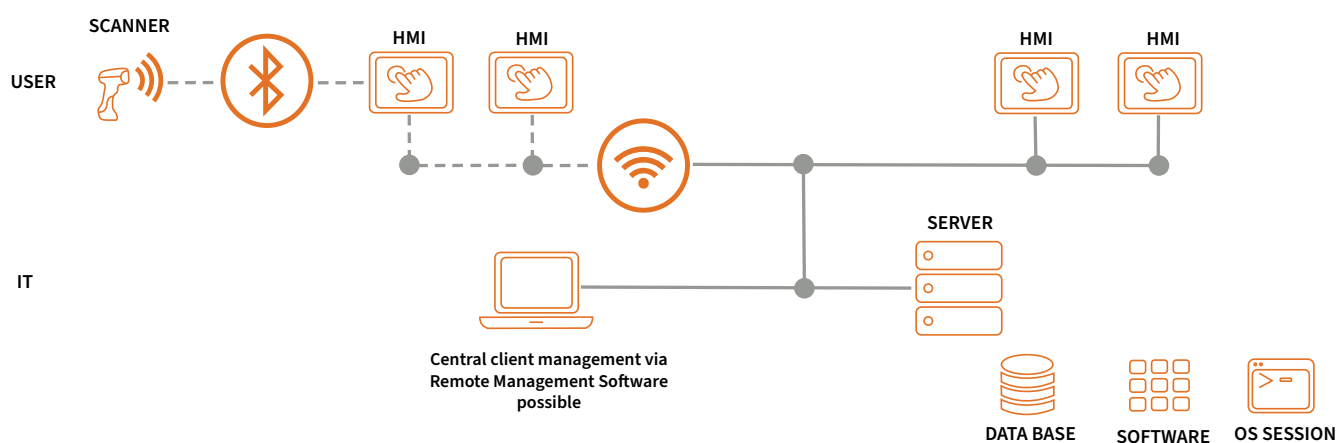
PLUG & PLAY

Secure plug-and-play connection via Ethernet/RJ45 to server/PC.



EXCEPTIONALLY COST-EFFECTIVE

Less expensive than conventional KVM solutions, thin clients, or PCs.



TECHNOLOGIES



COMPATIBLE WITH

- WAVE
- PILOT
- CONTROL

TECHNICAL DATA



For more information, scan the QR code or visit
<https://en-thin.systemec.solutions>



LIFE
SCIENCE
READY®

MOBILE WORKSTATION

**LIFE
SCIENCE
READY®**

For highest
demands



Can be operated
with gloves



Easy to clean and
resistant



Modular
combination



Ergonomic design

TROLLEY LIGHT TRAPEZOID

MOBILE, SPACE-SAVING WORKSTATION WITH POWERFUL BATTERY FOR CLEANROOM APPLICATIONS

Space-saving and stable: The TROLLEY LIGHT with a trapezoid stand. With a platform diameter of just around 55 cm, it is perfect for use in confined spaces. The TROLLEY LIGHT can be pushed right up against the wall. Thanks to its relatively lightweight design, the TROLLEY LIGHT is particularly easy to move. The fully encapsulated, sophisticated stainless steel construction, complying with protection class IP65, considerably reduces the amount of cleaning work. The TROLLEY screen height can be ergonomically adjusted with an optional stainless steel height adjuster.



PLUG & PLAY

Quick, inexpensive and simple installation without the need for structural modifications.



BATTERY FOR MULTIPLE SHIFTS

Choose between low-cost AGM batteries or extremely long life lithium-ion batteries (LiFePO4).



VERY EASY TO CLEAN

Easy to clean and resistant to cleaning agents thanks to sophisticated stainless steel construction.



EXCEPTIONALLY SPACE-SAVING

The compact base requires little space and can be pushed flat against the wall.

COMPATIBLE WITH

- WAVE
- PILOT
- Cleanroom keyboards
- Accessories

TECHNICAL DATA



For more information, scan the QR code or visit
<https://en-trolley-t.systec.solutions>



TROLLEY LIGHT Trapezoid as a customer installation

TROLLEY LIGHT 5-STAR

MOBILE AND STABLE CLEANROOM WORKSTATION WITH EXCEPTIONALLY LONG BATTERY OPERATING TIME

While offering full mobility, this base mounted on 5 rollers provides a stable stand ideally suited to a mobile dual-display solution, for example. The TROLLEY LIGHT 5-star can also be configured as a high version in which the display is tilted by 10°. A half-height version with a 60° tilted display is also possible. All versions can optionally be supplied with a keyboard.

COMPATIBLE WITH

- WAVE
- PILOT
- Cleanroom keyboards
- Accessories

TECHNICAL DATA



For more information, scan the QR code or visit

<https://www.systec-solutions.com/en/trolley-systems/trolley-light-5-star>



Interface plate with digital charge status display



TROLLEY LIGHT 5-star with dual display solution



PLUG & PLAY

Quick, inexpensive and simple installation without the need for structural modifications.



BATTERY FOR MULTIPLE SHIFTS

Choose between low-cost AGM batteries or extremely long life lithium-ion batteries.



VERY EASY TO CLEAN

Easy to clean and resistant to cleaning agents thanks to sophisticated stainless steel construction.



HEIGHT ADJUSTABLE

The TROLLEY screen height can be ergonomically adjusted using ergonomic stainless steel height adjusters (optional).



TROLLEY LIGHT 5-star as a customer installation

TROLLEY LIGHT INDUCTIVE

COMPACT STAND WITH INDUCTIVE CHARGING TECHNOLOGY FOR A WIRELESS CLEANROOM

Maximum mobility and wireless power transmission to avoid cross-contamination from cables and plug contacts: The TROLLEY LIGHT features inductive battery charging technology. To charge, the TROLLEY base is magnetically docks onto the charging station, starting the process automatically. Inductive charging stations distributed across different locations enable simultaneous operation and charging, ensuring continuous readiness of the system.



FASTER CHARGING THAN USING CABLE

A second coupler charges the battery more quickly than conventional charging technology.



FULL MOBILITY

Full mobility thanks to rollers, integrated wifi and high-power batteries.



VERY EASY TO CLEAN

Easy to clean and resistant to cleaning agents due to sophisticated design in stainless steel with IP65 protection.

MODEL VERSIONS

Available for:

- TROLLEY LIGHT Trapezoid
- TROLLEY LIGHT 5-Star

COMPATIBLE WITH

- WAVE
- PILOT
- Cleanroom keyboards
- Accessories



TROLLEY LIGHT 5-Star and TROLLEY LIGHT Trapezoid with inductive charging option

TECHNICAL DATA



For more information, scan the QR code or visit
<https://en-trolley-i.systec.solutions>



Inductive charging technology for the TROLLEY LIGHT 5-Star.



Charging process starts when docking to the station

TROLLEY SLIM

WORK FLEXIBLY, ERGONOMICALLY AND COST-EFFECTIVELY – EXCEPTIONALLY LIGHTWEIGHT WORKSTATION FOR CLEANROOMS

The TROLLEY SLIM is a lightweight and compact mobile solution without an integrated battery. It can be combined with either a stainless steel tablet or an HMI system, to which a keyboard can be added on request. Two different roller options allow customization to suit your needs. Equipped with guide castors, the system offers maximum mobility. The rollers make the TROLLEY SLIM a stand, allowing it to be moved as needed. Regardless of the version, the TROLLEY SLIM is ideally suited for GMP conditions and cleanrooms.

COMPATIBLE WITH

- WAVE
- PILOT
- Cleanroom keyboards
- Tablets

TECHNICAL DATA



For more information, scan the QR code or visit

<https://en-trolley-s.systec.solutions>



TROLLEY SLIM with stainless steel TABLET



*TROLLEY SLIM with the WAVE or PILOT
HMI system*



*TROLLEY SLIM with stainless steel
TABLET and CLICK HINGE*



PLUG & PLAY

Quick, inexpensive and simple installation without the need for structural modifications.



LIGHT WEIGHT

Its slim design makes the TROLLEY SLIM exceptionally easy to move.



VERY EASY TO CLEAN

Easy to clean and resistant to cleaning agents thanks to sophisticated stainless steel design with IP65 protection.



EXCEPTIONALLY COST-EFFECTIVE

The entry-level model for price-sensitive projects with demanding hygienic requirements.



TROLLEY SLIM as a mobile stand with DOCKING HINGE



TROLLEY SLIM with guide castors



TROLLEY SLIM with swivel castors

TROLLEY SLIM LAB

THE MODULAR SOLUTION FOR THE LABORATORY ENVIRONMENT

The TROLLEY SLIM LAB is specially tailored to the requirements of the pharmaceutical production sector and laboratories and is ideal for applications such as LIMS software, in-process controls, etc.

The modern, mobile concept of the TROLLEY SLIM LAB impresses with its attractive and compact base plate and the slim base with four cleanroom-compatible castors. These features ensure maximum mobility and stability so that the TROLLEY SLIM LAB can be used in any laboratory environment without any problems.

It always comes with a TABLET DOCKING HINGE that is compatible with both the Microsoft Surface Pro 10 and the iPad. As an AC or DC version and with integrated battery, it increases your productivity and effectiveness by extending the operating time of your tablet.

The modular design of the TROLLEY SLIM LAB offers a wide range of possible combinations. Using the T-connectors, you can flexibly configure many different accessories according to your specific requirements.

OPTIONAL ACCESSORIES:

- Wireless Scanner Charger
- Tray for label printer
- Petri Dish Holder
- Swabs Holder
- Basket



TROLLEY SLIM LAB as a mobile stand



PLUG & PLAY

Quick, inexpensive and simple installation without the need for structural modifications.



LIGHT WEIGHT

Its slim design makes the TROLLEY SLIM LAB exceptionally easy to move.



VERY EASY TO CLEAN

Easy to clean and resistant to cleaning agents thanks to sophisticated stainless steel design with IP65 protection.

TECHNICAL DATA



For more information, scan the QR code or visit

<https://www.systec-solutions.com/en/trolley-systems/trolley-slim-lab>



*TROLLEY SLIM LAB as a mobile stand with
TABLET DOCKING HINGE*



*TROLLEY SLIM LAB with inductive scanner charger, printer
and swab-/petri dish-holder*

TROLLEY COMPACT

READY-TO-CONNECT OPERATING STATION FOR CLEANROOMS – ALL-IN-ONE HMI SYSTEM, KEYBOARD AND PRINTER

The TROLLEY COMPACT is the ideal complete workstation for confined spaces in cleanrooms. It features a hygienic design with special double seals, fasteners, and internal hinges. Equipped with an HMI system, integrated keyboard, and a sturdy mobile stand, the TROLLEY COMPACT also includes a document drawer and space for a label printer. The labels can be easily accessed using the printer flap on the side. Thanks to its integrated battery, the system provides full mobility throughout the entire work-day.



PLUG & PLAY

Quick, inexpensive and simple installation without the need for structural modifications.



BATTERY FOR MULTIPLE SHIFTS

Choose between low-cost AGM batteries or extremely long life lithium-ion batteries (LiFePO4).



VERY EASY TO CLEAN

Easy to clean and resistant to cleaning agents thanks to sophisticated stainless steel design with IP65 protection.



SPACE FOR PRINTER AND DOCUMENTS

Equipped with a document drawer and space for a label printer.



TROLLEY COMPACT with integrated keyboard



Printer flap mounted on the side for easy access to printed labels.



TROLLEY COMPACT as a customer installation

COMPATIBLE WITH

- WAVE
- PILOT
- Cleanroom keyboards
- Printer

TECHNICAL DATA



For more information, scan the QR code or visit
<https://en-trolley-c.systec.solutions>

TROLLEY MAXI

READY-TO-USE CLEANROOM OPERATING STATION FEATURING HYGIENIC DESIGN AND CUSTOMIZABLE CONFIGURATION

The TROLLEY MAXI is a comprehensive cleanroom system designed to meet IP65 protection standards, constructed with adherence to hygienic design principles featuring special double seals, fasteners, and internal hinges. It functions both as a stationary and mobile complete system, equipped with an HMI system, integrated keyboard, drawer, and space for a label printer. A connector plate on the back allows for easy installation of peripherals such as scales on site, saving time and installation costs.



VERY EASY TO CLEAN

Easy to clean and resistant to cleaning agents thanks to sophisticated stainless steel design with IP65 protection.



SPACE FOR PRINTER AND DOCUMENTS

Equipped with a document drawer and space for a printer.



PLUG & PLAY

The workstation comes ready for connection and ready-to-use.

COMPATIBLE WITH

- WAVE
- PILOT
- Cleanroom keyboards
- Printer

TECHNICAL DATA



For more information, scan the QR code or visit
<https://en-trolley-m.systec.solutions>



TROLLEY MAXI as a mobile solution



TROLLEY MAXI as a customer installation



TROLLEY MAXI – Cleanroom workstation equipped with HMI system, integrated keyboard, drawer and space for a label printer



**LIFE
SCIENCE
READY®**

FIXED INSTALLATIONS

**LIFE
SCIENCE
READY®**

For highest
demands



Can be operated
with gloves



Easy to clean and
resistant



Modular
combination



Ergonomic design

ASSEMBLY SOLUTIONS

FLEXIBLE SUPPORT ARM SYSTEMS FOR ALL CLEANROOM ENVIRONMENTS

Thanks to our extensive range of options, including fixed installations as well as rotating and swivel-mounted systems, you will certainly find the optimal solution for your specific needs. Dual-display setups can be configured vertically or horizontally, with direct mounting options available for walls, ceilings, floors, and benches. Seamless integration between components facilitates easy cleaning. Constructed entirely from stainless steel, all installation options adhere to IP65 standards.

COMPATIBLE WITH

- WAVE
- PILOT
- Cleanroom keyboards

TECHNICAL DATA



For more information, scan the QR code or visit <https://en-mount.systec.solutions>



WAVE as an assembly solution with U-tube



Vertical duplex system for two HMI systems



Horizontal duplex system for two HMI systems



2-point attachment for wall mounting systems



L-tube for wall mounting



U-tube for wall mounting



Direct wall mounting



Bench mounting with stainless steel bench plate



Stand/bench mounting with flange



Ceiling mounting as single or duplex system

DESKTOP SOLUTIONS

ERGONOMIC WORKSTATIONS FOR LABORATORIES AND CLEANROOMS – COMPLIANT TO GMP STANDARDS

We offer a wide range of laboratory workstation configurations designed ergonomically for both laboratory and cleanroom benches, especially suitable for limited space. The workstations can be operated via touch screens or using cleanroom keyboards. Keyboards are either directly integrated into the HMI system or available as desktop versions. If an external keyboard is needed, we provide a magnetic keyboard shelf that attaches directly to the HMI.



VERY EASY TO CLEAN

Easy to clean and resistant to cleaning agents thanks to sophisticated stainless steel construction.



NO MODIFICATIONS NECESSARY

Space-saving solutions that require no modifications to walls, ceilings, or floors.



ERGONOMICALLY DESIGNED

Display and keyboard adjustable to the user using torque hinges.



Space-saving stainless steel stand with freely adjustable tilt angle and cleanroom keyboard



Table top with flange



Stand/table mounting with flange



Space-saving stainless steel stand with freely adjustable tilt angle

COMPATIBLE WITH

- WAVE
- PILOT
- Cleanroom keyboards

MODEL VERSIONS

- Available in 17", 21,5", 24" and 27"
- Configurable as PC, thin client or monitor

TECHNICAL DATA



For more information, scan the QR code or visit
<https://en-desktop.systec.solutions>



LIFE
SCIENCE
READY®

ADD-ONS

**LIFE
SCIENCE
READY®**

For highest
demands



Modular
combination



Ergonomic design

CLEANROOM KEYBOARDS

GMP-COMPLIANT KEYBOARDS WITH GLASS OR MEMBRANE SURFACE – IDEAL FOR CLEANROOMS

Our glass and membrane keyboards have been specifically developed for cleanroom applications, featuring exceptionally smooth and easy-to-clean surfaces. Both keyboards are designed to withstand regular cleaning with standard cleanroom cleaning agents and disinfectants. Internally routed cables, facilitated by torque hinges during installation, prevent damage from external factors.

The glass surface is highly durable due to printing on the rear, whereas the membrane surface is ideal for sensitive areas where glass may pose a risk. While the glass keyboards operate on the capacitive principle with acoustic feedback, the membrane keyboards feature short-stroke keys for tactile feedback.



VERY EASY TO CLEAN

Easy to clean and resistant to cleaning agents thanks to sophisticated stainless steel construction.



CAN BE OPERATED WITH GLOVES

Can be operated with up to three layers of cleanroom gloves.



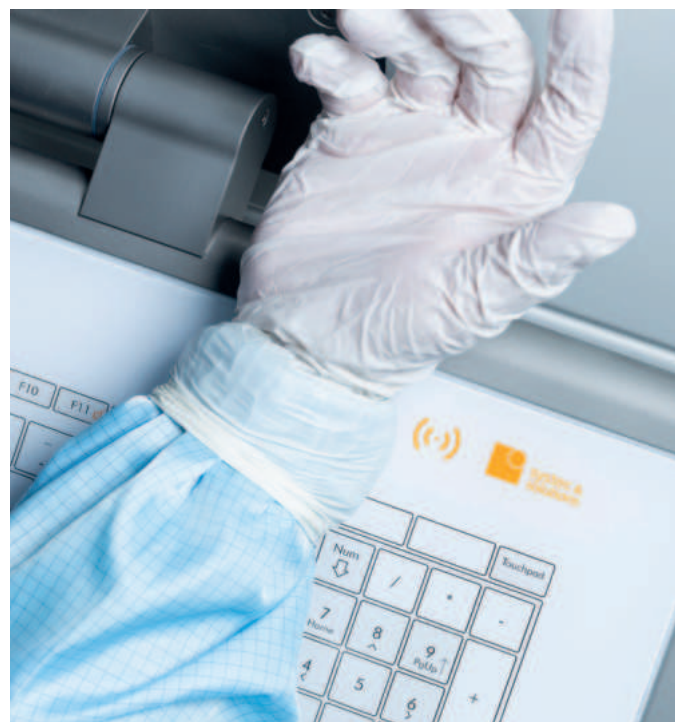
EXCEPTIONALLY ERGONOMIC

Ergonomic adjustment of the inclination angle to the user is possible.

CLICK HINGE



Patented solution: CLICK HINGE also available for the HMI system



Secure authentication via RFID and Nymi Band

GLASS KEYBOARDS



MEMBRANE KEYBOARDS



KEYBOARD TNG for the PILOT

COMPATIBLE WITH

- WAVE
- PILOT
- CONTROL
- TROLLEY
- Desktop solutions

MODEL VERSIONS

- Available in bench, support, and integral versions
- Different language layouts

TECHNICAL DATA



For more information, scan the QR code or visit
<https://en-key.systec.solutions>

ACCESSORIES FOR HMI SYSTEMS

COMPREHENSIVE SELECTION OF CLEANROOM COMPLIANT ACCESSORIES FOR ALL NEEDS

Additional practical accessories for our HMI systems ensure easy and ergonomic everyday use. With these features, the systems can be precisely tailored to specific work processes and production environments. All components have been specifically developed and optimized for cleanroom use, constructed entirely from stainless steel and other cleanroom-compatible materials, seamlessly integrating with our HMI systems.

TECHNICAL DATA



For more information, scan the QR code or visit
<https://www.systec-solutions.com/en/add-ons/add-ons-overview>



Tiltable keyboard tray



WLAN antenna



Handle



Speaker



Scanner cradle mount



Scanner fork for secure storage of Bluetooth or wired scanners



Touch pen attached to the HMI system with stainless steel holder and sheathed stainless steel cable



IP65 stainless steel touch pen with interchangeable tip



Cable manager



Various controls and/or emergency stop buttons can be added



Cover cap for CLICK HINGE

AUTHENTICATION

SECURE AND EASY AUTHENTICATION IN SECONDS

Routine logins, confirmations, or electronic signatures compliant with 21 CFR Part 11 can be time-consuming and pose security risks. Electronic or biometric authentication solutions, such as RFID cards or Nymi Bands, offer more efficient and secure workflows. User authentication is completed within seconds, reducing the risk of errors and saving a significant amount of time. The CONNECT BOX serves as an interface for authentication and can be flexibly positioned. All solutions comply with IP65 standards and have been specifically developed for cleanroom applications.



Authentication at the HMI system using CONNECT BOX



Authentication using RFID



Authentication using CONNECT BOX DESKTOP



Authentication using CONNECT BOX FM as wall installation

MODEL VERSIONS

- Available as bench, attachment, and integral versions
- Can be integrated into keyboards or HMI systems



TABLET CONNECT BOX

COMPATIBLE WITH

- WAVE
- PILOT
- CONTROL
- MODI
- Cleanroom keyboards



Nymi Band



Authentication using RFID

TECHNICAL DATA



For more information, scan the QR code or visit
<https://en-auth.systec.solutions>

SCANNERS & PRINTERS

COMPLETE YOUR CLEANROOM SYSTEM

Choose from 1D and 2D scanners, as well as thermal transfer label printers. The scanners feature Bluetooth interfaces and high-performance batteries for extended mobile operation. The printers provide resolutions up to 600 dpi and high-speed label throughput, ensuring efficiency. They are user-friendly and seamlessly integrate into existing printing solutions. All devices can be customized using stainless steel housings to meet specific requirements.

TECHNICAL DATA



For more information, scan the QR code or visit
<https://en-scan.systec.solutions>



PRINTER in TROLLEY MAXI



Zebra CS60-HC



PowerScan PM9501/PBT9501



PowerScan PD9531



Zebra DS3678



Zebra DS3608



Zebra ZD620t-HC



Zebra ZT220



Zebra ZT411



XC Q6.3

PRINTER BOX & SCANNER BOX

CLEANROOM-COMPLIANT INTEGRATION INTO IP65 STAINLESS STEEL HOUSINGS

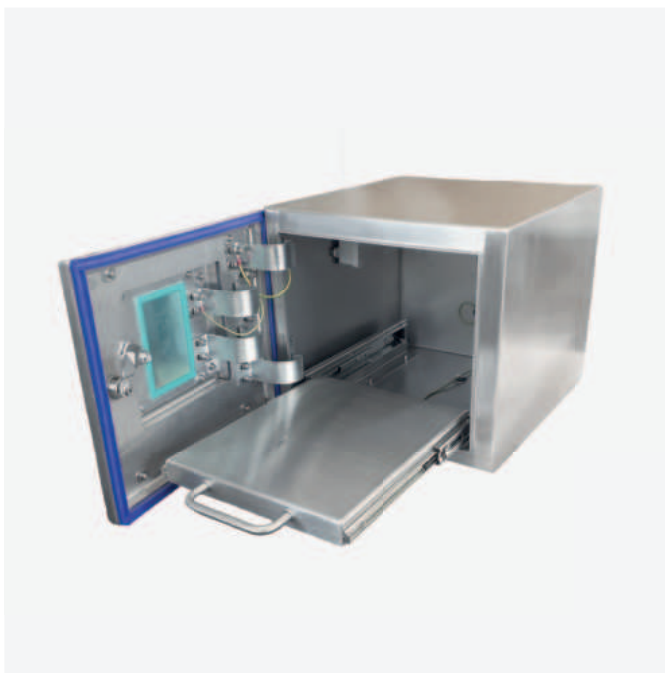
PRINTER BOX

Using our PRINTER BOX, you can install printers of nearly any size in a sterile environment while meeting GMP requirements. The PRINTER BOX meets the highest hygiene standards with special double seals, fasteners, and internal hinges. Labels can be easily accessed through the flap. The printer is placed on a pull-out platform and connected inside the PRINTER BOX. Rear connections for power, USB, and Ethernet allow flexible usage of the PRINTER BOX.

All our stainless steel printer housings can be placed on a shelf or integrated into a wall.

MODEL VERSIONS

- Option S (W 360/H 320/D 445, approx. 18 kg without configurations)
- Option M (W 400/H 400/D 650, approx. 28 kg without configurations)



PRINTER BOX Option M, open view



PRINTER BOX Option M, closed

SCANNER BOX

The SCANNER BOX can safely and conveniently accommodate up to four scanner stations or two multi-charging stations. It is exceptionally easy to clean and meets IP65 standards. The charge level can be checked through a viewing window in the door of the SCANNER BOX. Once charging is complete, the door can be securely opened and closed with a toggle lock. Inside, there is a compartment for the power supply units, with cables safely routed through an IP65 opening. The rear panel is screw-mounted and can be detached for servicing purposes. The SCANNER BOX comes pre-installed with charging stations and power supply units.

MODEL VERSIONS

- Option (W 470/H 260/D 265, approx. 22 kg without configurations)

COMPATIBLE WITH

- Scanners

TECHNICAL DATA



For more information,
scan the QR code or visit:
<https://en-box.systemec.solutions>



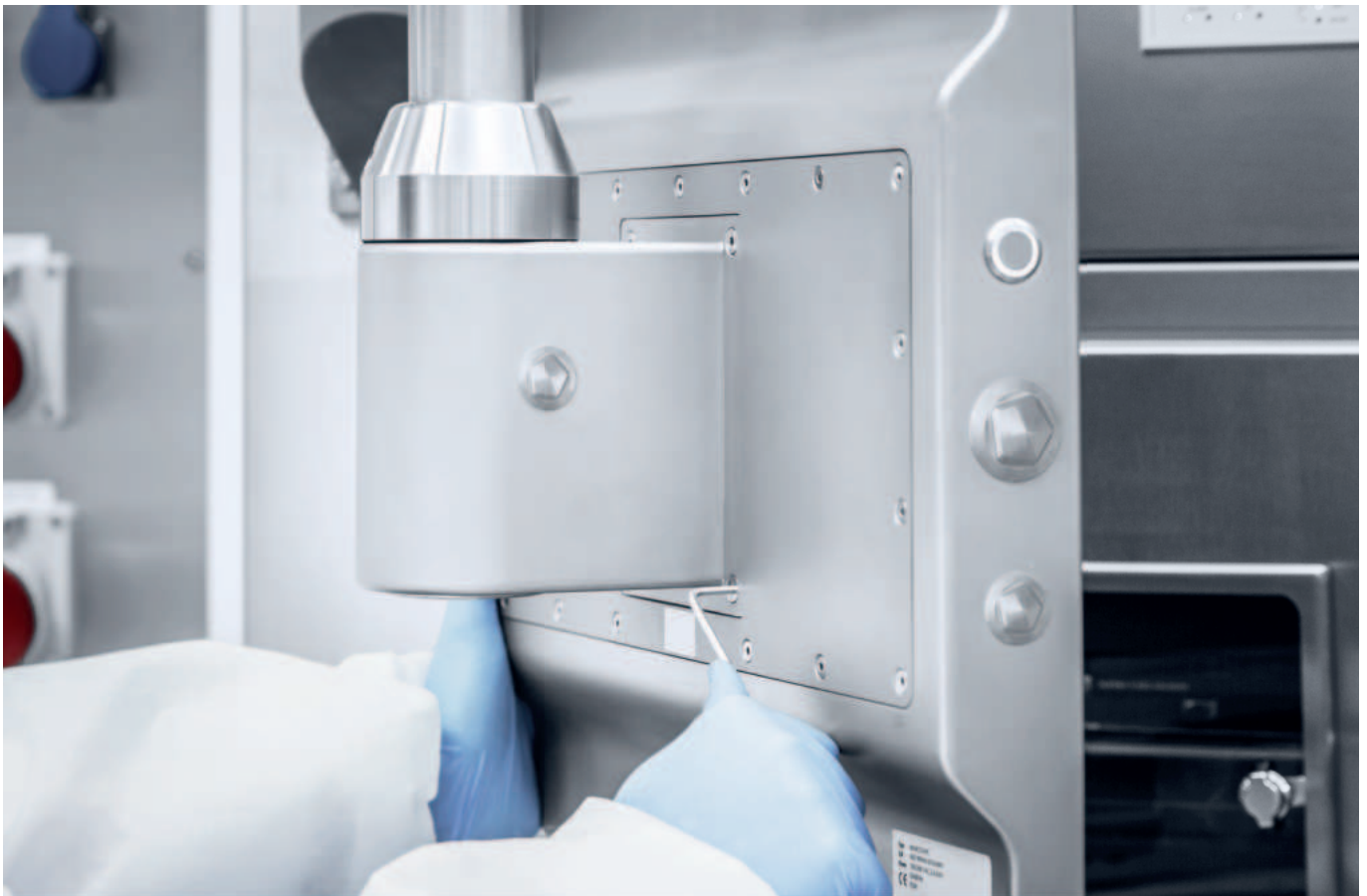
Scanner box, open

COMPREHENSIVE CARE-FREE SERVICE

EVERYTHING FROM A SINGLE SOURCE.
SO YOU CAN FOCUS ON YOUR WORK.

Whether it's a new installation or a retrofit, if you plan to use new IT systems in cleanrooms and GMP environments, we are here to help. From consulting and project planning to configuration, commissioning, qualification, and maintenance, we offer you a complete solution, all from a single source – for your perfect IT solution.

Our approach is holistic and aims to provide you with a customized IT solution that meets your current requirements. We take the time to understand your individual needs to present you with a solution perfectly aligned with your workflows. Through our comprehensive services, we strive to keep your IT systems running smoothly and optimize your production processes so you can focus on your core business.



Assembly service

OUR 5 SERVICE PROMISES


1

COMPREHENSIVE CONSULTING, PLANNING AND PROJECT MANAGEMENT

- Advice on the selection of technically, spatially and ergonomically suitable HMI systems for cleanrooms and production facilities.
- On-site consultation: whether in the cleanroom, during shell construction, or based on an initial floor plan.
- GAP analysis for the development of a future-proof GMP IT landscape in the cleanroom.
- Support throughout the entire duration of the project and interface coordination during the construction phase.

2

BUILD-TO-ORDER

- Customer-specific solutions even for small-scale orders.
- We document your requirements and create the specification.
- Our experienced team of engineers will support you with their expert knowledge.

3

INSTALLATION BY EXPERIENCED SERVICE ENGINEERS

- Installation and commissioning of your new IT systems
- Connection of peripherals
- Conversion or upgrade of your new hardware
- System function tests on site including documentation

4

FULL GMP-SERVICE (GMP- AND FDA-COMPLIANT)

- Complete GMP documentation from a single source
- Support in creating a detailed specification (URS)
- Identification of risks and derivation of tests
- Support during installation and functional qualification (IQ/OQ)
- Implementation of the tests at your site

5

PROFESSIONAL MAINTENANCE AFTER COMMISSIONING

- Maintenance contracts tailored to you
- Maintenance of wearing parts in required maintenance cycles
- European and global network of professional technicians
- Remote and on-site service

TAILORMADE SERVICE FOR YOUR CLEANROOM HMI SYSTEMS AND TABLETS - ALL OVER THE WORLD

FOR STREAMLESS OPERATIONS AND MINIMIZED DOWNTIME

Maximum security and minimal downtime – with our customized service offering, we ensure that your HMI systems are always in optimal condition. We take care of the complete coordination and organization of all necessary maintenance and inspection measures, so you can fully focus on your core business.

YOUR BENEFITS AT A GLANCE:

- Regular maintenance extends the lifespan of your systems and reduces unplanned downtime.
- Complete documentation – GMP-compliant and seamless.
- Optimized processes by reducing your control effort.
- Maximum operational safety through preventive measures.
- Fast emergency assistance thanks to the 24-hour hotline (Service Level 3).

SUPPORT

Efficient and reliable support is essential to ensure the smooth operation of your HMI systems. Our experienced support team provides technical expertise and fast solutions to efficiently resolve issues and minimize downtime. Whether it's regular maintenance, urgent malfunctions, or individual adjustments – we offer comprehensive assistance tailored to your specific needs.

Through proactive measures, targeted optimizations, and direct access to our experts, we ensure that your systems remain highly efficient and up to date. Our support services are flexible and scalable, providing exactly the level of assistance you need for uninterrupted operation.



OUR SERVICE LEVELS AT A GLANCE:

01

Level 1 – basic maintenance & integrity check

- Annual maintenance of your systems.
- Integrity check: Inspection for damage, secure installation, full functionality, and sufficient battery capacity.
- Minor defects, such as porous seals or defective covers, are rectified on-site.
- Additional „on-demand“ service visits available.

02

Level 2 – extended service & training

- All Level 1 services.
- Up to two annual inspections by our technicians.
- User training for your staff.
- Inspection of third-party devices optionally available.
- Client software support (IGEL, NYMI).

03

Level 3 – premium service with 24/7 emergency hotline

- All Level 2 services.
- Four service appointments annually.
- Defined spare parts kept in stock for immediate availability.
- Quick replacement by a technician.
- 24-hour emergency hotline for fast support.

TAILORMADE SERVICE FOR YOUR CLEANROOM HMI SYSTEMS AND TABLETS - USA

RELIABLE SERVICE FOR YOUR CLEANROOM OPERATIONS

In the pharmaceutical industry, precision, reliability, and efficiency are essential. Our service plans for HMIs and tablets in cleanroom environments ensure seamless operations, minimizing downtime and maximizing productivity.

Whether you choose our Basic or Premium plan, you'll benefit from expert support, fast response times, and cost-saving advantages tailored to your needs.



Send your request by scanning the QR code or
by writing an e-mail to support@systec-solutions.us



THE TWO-TIER SERVICE CONCEPT:

Our two-tier service concept – Basic and Premium provides flexible and cost-effective solutions tailored to your needs.

Flexibility & customization

Choose between two service levels based on your needs and budget. Basic offers essential coverage at an affordable price, while Premium provides comprehensive protection with faster response times.

Cost savings & budget predictability

Fixed annual costs ensure better financial planning with no unexpected expenses. Discounts on replacement devices and additional visits reduce long-term costs. Premium includes unlimited repairs for maximum protection.

Minimized downtime

- Basic: Response within 48 hours, on-site visit in approx. 2 weeks
- Premium: Response within 24 hours, on-site visit in 3–5 business days

Optimal equipment availability & performance

Regular maintenance visits prevent unexpected failures. Premium includes software support & operator training to enhance efficiency.

Expert knowledge & industry experience

Highly trained technicians specializing in pharmaceutical cleanroom environments provide both on-site and remote support for fast, tailored solutions.

The two-tier concept allows businesses to choose between cost efficiency and maximum security to stay **LIFE SCIENCE READY**.

INDEX

A

Accessories	54
ATEX systems	44
Authentication	56

B

Battery operated	20
Bench mounting	48
Biometric	56

C

Ceiling mounting	47
Cleanroom connector	18
Cleanroom keyboard	52
Cleanroom tablet	18
CONNECT BOX	56
Consultation	63
Control	14
Cosmetics	5

E

Easy Click Magnetic Mount	17
Endpoint	24
Emergency stop	55

F

FDA	63
Flexible stand	36
Food	5

G

Glass keyboard	52
GMP	63

H

HMI systems	9
-------------	---

I

IGEL	26
Inductive charging	34
Integral panel	14
iPad*	18
IP65	16
IP67	12
ISO 14644	3

K

Keyboards	52
-----------	----

L

Lithium-ion (LiFePO4)	30
-----------------------	----

M

Membrane keyboard	52
Microsoft Surface	18
Mobile solution	29

N

Nymi	57
------	----

P

PILOT	12
Plug & play	20
PRINTER BOX	60
Printer	58
Power over Ethernet	16

S

Scanner	64
SCANNER BOX	66
Scanner holder	64
Service	6
Speaker	60
Support arm	52

T

Tablet	18
Thin client	30
Touch pen	61
TROLLEY	34

W

Wall installation	46
Wall mounting	46
WAVE	10



LIFE
SCIENCE
READY®

Systec & Solutions GmbH

Wilhelm-Schickard-Str. 9
76131 Karlsruhe

Phone: +49 721 66351 0

talk@systec-solutions.com
systec-solutions.com

WAVE®, MODI®, PILOT®, TROL-
LEY® & Life Science Ready®
are registered trademarks of
Systec & Solutions GmbH