



# **BEST-IN-CLASS HMI SYSTEMS FOR THE LIFE SCIENCES INDUSTRY**

LIFE  
SCIENCE  
READY®





# NO COMPROMISES

## WE ENSURE THAT THE GLOBAL LIFE SCIENCES INDUSTRY CAN RESEARCH AND PRODUCE SUSTAINABLY AND SAFELY.

Productivity begins with an uncompromisingly convenient IT solution and people who love to use it. That's why our HMI systems are based on our in-depth knowledge of the production requirements in cleanrooms and the pharmaceutical industry.



### FOR THE HIGHEST DEMANDS

Developed in accordance with GMP, FDA and ISO 14644 requirements. Our systems are suitable for cleanroom classes A to D and hygienic production.



### PLUG & PLAY

Our HMI systems are available ready for operation, are quick and easy to install and ready for immediate use. Save on structural modifications.



### EASY CLEANING

Hygienic cleanliness has never been easier. All our systems are designed for resistance and easy cleaning.



### TAILORED FLEXIBILITY

Standardized or customized. Our modular product range offers solutions for all the requirements of the life sciences industry.



### COMPREHENSIVE CARE-FREE SERVICE

Everything from a single source. From consultation and project planning to configuration and commissioning, to qualification and maintenance.



### OUTSTANDING QUALITY

Your requirements and our experience. These are the basis for continuous development of our HMI solutions. State-of-the-art technology for top quality.



### GLOBAL NETWORK FOR YOU

Support where you need it. Our partner and service network is there for you all over the world.



### DURABILITY & LONG-TERM AVAILABILITY

Our HMI solutions are designed for 24/7 operation in a demanding environment. For a long, reliable IT service life.

**LIFE  
SCIENCE  
READY®**

Our life science ready solutions are impressive thanks to their unique combination of aesthetic design and innovative technology. They are created to provide state-of-the-art working environments in the life sciences industry and to motivate your team to achieve top performance. So that you can produce sustainably, efficiently and competitively.





LIFE  
SCIENCE  
READY®



# FOR REGULATED INDUSTRY

## WE ENSURE THAT YOUR WORK PROCESSES EASILY SATISFY GMP STANDARDS.

Our HMI systems are used wherever the highest standards have to be met. All the components and the construction of our hardware are fully suitable for industrial use and designed to be user-friendly. This prevents incorrect operation and increases your process reliability.



### PHARMACEUTICAL INDUSTRY



### COSMETICS INDUSTRY



### FOOD INDUSTRY

GMP-compliant. Predominantly built to protection class IP65 and higher. HACCP-compliant. We meet all requirements for cleaning, protection and handling. For example, our multi-touch screens work even with cleanroom gloves. Cleaning agents or dust containing acids cannot harm the stainless steel housings. And our glass keyboards can be fitted with a laminated polyester membrane to make them splinter-proof.

## THE TOP 20 PHARMACEUTICAL COMPANIES USE OUR PRODUCTS

Almost all well-known pharmaceutical manufacturers from over 30 countries have been trusting us and our products for many years.

*"The computer terminals in production have to meet the highest quality standards, especially with regard to hygiene and safety. After comparing several hardware manufacturers, Systec & Solutions was the obvious choice. As well as the quality of the equipment, we were impressed by the easy cleaning and disinfection, the performance of the computer units and the great service from the manufacturer."*

Robert Gundlach, IT Project Manager, Takeda



# COMPREHENSIVE CARE-FREE SERVICE

**EVERYTHING FROM A SINGLE SOURCE. SO THAT YOU CAN CONCENTRATE ON YOUR WORK.**

Whether it's a new installation or retrofitting. If you plan to use new IT systems in cleanrooms and GMP environments, we would be happy to help you. From consulting and project planning, configuration and commissioning to qualification and maintenance, we offer you everything from a single source. For your perfect IT solution.

## OUR 5 SERVICE PROMISES

1

### **COMPREHENSIVE CONSULTING, PLANNING AND PROJECT MANAGEMENT**

- Advice on selecting IT systems that suit your technical, spatial and ergonomic requirements
- Consulting on plant and cleanroom planning
- Support in creating detailed specifications (URS)
- Support with the subsequent design qualification (DQ)

2

### **INSTALLATION BY EXPERIENCED SERVICE ENGINEERS**

- Installation and commissioning of your new IT systems
- Connection of peripherals and accessories
- Conversion or upgrade of your new hardware
- System function tests on site including documentation

3

### **HARDWARE INSTALLATION QUALIFICATION (HW-IQ) ON SITE**

- Complete hardware qualification including GMP-compliant signature regulation
- Creation of the entire IQ documents for your IT hardware within a very short time
- You save time, costs and effort and receive professionally qualified IT systems

4

### **PROFESSIONAL MAINTENANCE AFTER COMMISSIONING**

- Maintenance contracts tailored to you
- Maintenance of wearing parts in required maintenance cycles
- European and global network of professional technicians
- Remote and on-site service

5

### **BUILD-TO-ORDER**

- Customer-specific solutions are possible even with a small quantity
- We document your requirements and create the specification
- Our experienced team of engineers will support you with their expert knowledge





# THE RIGHT SOLUTION FOR EVERY REQUIREMENT

## HMI SYSTEMS AND INSTALLATION OPTIONS



**15** WAVE

Stainless steel 1.4301 / AISI 304



**17** PILOT

Stainless steel 1.4404 / AISI 316L



**18** Support arm solutions



**21** Desktop solutions



**22** Mobile solutions

## BUILT-IN SOLUTIONS



**43** CONTROL

## SMALL FORMAT DISPLAYS



**47** MODI



## TABLET SOLUTIONS



**50** Tablets

## EX SOLUTIONS



**67** EX systems

## ADD-ONS



**54** Cleanroom keyboards



**56** Accessories



**58** Authentication



**60** Scanners & printers

# STANDARD VERSIONS

**NEW!**



## PRECONFIGURED SYSTEMS SAVE YOU TIME AND MONEY

We have put together four standard versions of our HMI systems, based on our many years of experience from customer projects in the GMP sector. These versions are perfectly tailored to the specific requirements of your main application, which helps you to quickly identify the exact system that is right for you, and opens the door to a whole host of benefits.

### THREE SIMPLE STEPS ARE ALL IT TAKES

1

#### REQUIREMENTS

Ideally, you will already have an overview of the different versions we provide, and let us know your thoughts in an initial discussion.

2

#### CONSULTING

We discuss the possibilities afforded by the individual versions together to find the ideal solution for you.

3

#### BENEFITS

Our versions consist of standard components, meaning you benefit from fast processing times and lower costs.

### TECHNICAL DATA



For more information, scan the QR code or visit [systec-solutions.com/en/versions](https://www.systec-solutions.com/en/versions)



## LIGHT

When the main focus is the budget rather than computing power.

### BENEFITS



Easy to operate thanks to resistive touch functionality compatible with almost all glove types.



Affordable entry-level version for GMP-compliant hardware solutions.



Ideal for projects on a budget.

### AVAILABLE FOR THE FOLLOWING PRODUCTS:

WAVE 221

## ENDPOINT

For virtualized server-based solutions via Microsoft TSE/RDP, Citrix, etc.

### BENEFITS



Ideal for use with IGEL OS, ThinManager or similar endpoint solutions. Alternatively, it can also be used as a Windows thin client.



The perfect solution for getting the most out of your cleanroom with virtualized applications.



For use as a MES/DCS system, for KPI/status displays, or cloud applications (e.g. Microsoft Azure).

### AVAILABLE FOR THE FOLLOWING PRODUCTS:

WAVE | PILOT | CONTROL

## ALLROUND

Meets all the requirements for an MES system in the life science sector.

### BENEFITS



Fat client/PC solution for Windows 10 applications; can be expanded with extensive interfaces and bundles.



All applications are based on Windows 10 with the required interfaces. RFID/NFC authentication solutions (optional CONNECT BOX required).



The best equipment/performance ratio for an HMI system based on Windows 10.

### AVAILABLE FOR THE FOLLOWING PRODUCTS:

WAVE | PILOT | CONTROL

## PERFORMANCE

High-performance equipment for exceptional performance and interface requirements.

### BENEFITS



Fat client/PC solution for use where computing power is required locally.



Designed for high-performance applications, redundant network connections, or extensive connectivity with terminal devices (e.g. chromatographs or analyzers).



Superb performance for demanding applications.

### AVAILABLE FOR THE FOLLOWING PRODUCTS:

WAVE | PILOT | CONTROL



## CUSTOM

Can't find the right PC configuration for your requirements? Don't worry, we can always offer you a customized solution. Our HMI systems are optionally available with features such as loudspeakers, an emergency shut-off function, and function keys, as well as customer-specific interfaces. We would be pleased to advise you.

# HMI SYSTEMS AND INSTALLATION OPTIONS

**LIFE  
SCIENCE  
READY**

For the highest  
demands



Can be operated  
with gloves



Easy to clean and  
resistant



Modular  
combination



Ergonomic  
design



**LIFE  
SCIENCE  
READY®**





WAVE as a mobile solution on TROLLEY system (page 22)



WAVE on U-tube wall mounting (page 18)



WAVE as desktop solution (page 21)



# WAVE

## THE IDEAL HMI SYSTEM FOR CLEANROOMS AND GMP ENVIRONMENTS IN THE PHARMACEUTICAL INDUSTRY

Extremely easy cleaning, cutting-edge technologies and state-of-the-art design - In its IP65 stainless steel housing the WAVE HMI system can be cleaned thoroughly in a very short time, and almost all cleaning agents and disinfectants can be used. Equipped with a brilliant, visually bonded and non-reflecting IPS LCD display, it is ideal for displaying MES software, ERP and process control systems. The WAVE is also available in a large-screen version with a 55" display and can be used to display KPIs, for example.



### IDEAL FOR THE PHARMACEUTICAL INDUSTRY

Developed for GMP conditions and cleanroom classes A-D.



### VERY EASY TO CLEAN

Easy to clean and resistant to cleaning agents thanks to sophisticated stainless steel construction.



### ATTRACTIVE DESIGN AND FUNCTIONAL

Designed for cleanrooms. Without beads, edges or horizontal surfaces on which liquids collect.



### INTUITIVE MULTI-TOUCH SCREEN

The touch screen can be operated wearing standard cleanroom gloves.

### MODEL VERSIONS

- Available in 21", 24", 27", 32" and 55"
- Configurable as PC, thin client (page 39) or monitor
- 27", 32", 55" available in UHD resolution

### COMPATIBLE WITH

- Keyboards (page 54)
- Accessories (page 56)
- Authentication (page 58)



### TECHNICAL DATA



For more information, scan the QR code or visit [systec-solutions.com/en/wave](https://systec-solutions.com/en/wave)



WAVE on 10 degree tilted equipment rack adapter



WAVE can also be configured in portrait orientation (extremely low viewing angle)



PILOT for direct wall mounting (page 18)



PILOT as desktop solution (page 21)



PILOT as a mobile solution on TROLLEY system (page 22)

# PILOT

## THE IDEAL HMI SYSTEM FOR HYGIENE REQUIREMENTS IN SPECIALIZED ENVIRONMENTS

The PILOT HMI system is ideally suited for use in the food industry and similar applications. With a laminated polyester membrane to reduce reflection and guard against splinters of glass, they are optimally designed for specialized fields such as the manufacture of food products. MES software, ERP and process control systems can be displayed on the brilliant, visually bonded and non-reflecting IPS LCD display. The robust 1.4404 stainless steel housing with protection class IP67 and the expandable controls also make the system ideal for machine manufacturers.



### VERY EASY TO CLEAN

Easy to clean and resistant to cleaning agents. Constructed without beads or edges.



### FOR SPECIALIZED DEMANDS

Sophisticated construction in stainless steel 1.4404. Designed for use in damp and dusty environments.



### CONTROLS AND EMERGENCY STOP ELEMENTS

For more functions and safety - ideal for machine manufacturers and automation specialists.



### INTUITIVE MULTI-TOUCH SCREEN

The touch screen can be operated wearing standard cleanroom gloves.

## MODEL VERSIONS

- Available in 17", 19" and 21.5"
- Configurable as PC, thin client (page 39) or monitor

## COMPATIBLE WITH

- Keyboards (page 54)
- Accessories (page 56)
- Authentication (page 58)



## TECHNICAL DATA



For more information, scan the QR code or visit [systec-solutions.com/en/pilot](https://systec-solutions.com/en/pilot)



Optional RFID/NFC/Smartcard interface (page 58)



Can be configured with controls and emergency stop switches



# SUPPORT ARM SOLUTIONS

## FLEXIBLE SUPPORT ARM SYSTEMS FOR EVERY CLEANROOM ENVIRONMENT

You are sure to find the best solution for your particular situation among the wide choice of options available, ranging from fixed installation to rotating and swivel-mounted systems. Dual-display solutions in vertical or horizontal arrangement are possible along with direct mounting on a wall, ceiling, floor or bench. Smooth transitions between the individual components make cleaning much easier. Made entirely of stainless steel, all installation options comply with IP65.

### EXAMPLE CONFIGURATIONS

1. L-tube for wall mounting, up to 350 degree rotation.
2. U-tube for wall mounting, swiveling and up to 350 degree rotation.
3. 2-point attachment for wall mounting, up to 350 degree rotation.
4. Ceiling mounting, as single or duplex system, up to 350 degree rotation.
5. Vertical duplex system for two HMI systems, up to 350 degree rotation.
6. Horizontal duplex system for two HMI systems, rotating and tilting.
7. Bench mounting with stainless steel bench plate, up to 350 degree rotation.
8. Stand / bench mounting with flange, up to 350 degree rotation.
9. Direct wall mounting.
10. Duplex bench mounting (view from rear).

### COMPATIBLE WITH

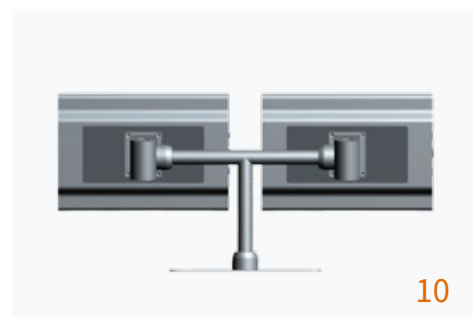
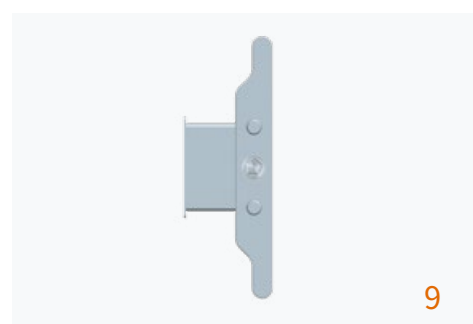
- WAVE (page 15)
- PILOT (page 17)
- Keyboards (page 54)

### TECHNICAL DATA



For more information, scan the QR code or visit [systec-solutions.com/en/support-arms](https://www.systec-solutions.com/en/support-arms)





Example configurations -  
We would be happy to advise you to create your customer-specific solution.

Installation using a stainless steel tube on the bench enables cable routing in accordance with cleanroom requirements



**VERY EASY  
TO CLEAN**

Easy to clean and resistant to cleaning agents thanks to sophisticated stainless steel construction.



**NO MODIFICATIONS  
TO THE ROOM  
NECESSARY**

Space-saving solution that leaves walls, ceilings and floors unchanged.



**ERGONOMICALLY  
DESIGNED**

Display or keyboard adjustable to the user using torque hinges.

**TECHNICAL DATA**



For more information, scan the QR code or visit [systec-solutions.com/en/desktop-solutions](https://systec-solutions.com/en/desktop-solutions)

# DESKTOP SOLUTIONS

## ERGONOMIC WORKSTATIONS TO GMP STANDARDS FOR LABORATORIES AND CLEANROOMS

We can offer a whole range of different laboratory workstation versions for ergonomic design of laboratory and cleanroom benches where little space is available. They can be operated using the touch screen and using cleanroom keyboards. The latter can either be selected as a desktop version or attached directly to the HMI system. If an external keyboard is required, we can supply a magnetic keyboard shelf for fitting directly to the HMI (page 56) as an alternative.

Picture p. 20: Mounting on bench, HMI system on stainless steel tube, enables internal cable routing complying with cleanroom requirements, can be combined with keyboard on torque hinge for exceptionally easy cleaning or desktop keyboard

Picture p. 21, left: Attachment of HMI system to stainless steel tube on stainless steel stand, flexible use, external cable routing, can be combined with keyboard on torque hinge or desktop keyboard

Picture p. 21, right: HMI system on a space-saving stainless steel stand, freely adjustable system angle, can be combined with a desktop keyboard or can be operated using the multi-touch display

### MODEL VERSIONS

- Available in 17", 19", 21", 24" and 27"
- Configurable as PC, thin client (page 39) or monitor

### COMPATIBLE WITH

- WAVE (page 15)
- PILOT (page 17)
- Keyboards (page 54)



Stainless steel stand



Space-saving stainless steel stand with continuously adjustable angle of inclination



# MOBILE SOLUTIONS - THE TROLLEY SYSTEM

**Made in Germany.**

With utility model  
and industrial design  
protection

## MOBILE OPERATING STATIONS FOR CLEANROOMS – CUSTOMIZED CONFIGURATION

From a space-saving compact version through to a complete system, the right mobile solution is available for any requirement. With cleanroom-compatible rollers, battery and wifi, the workstations can be moved flexibly in the production environment. There is no need for complex and expensive HMI system installation and wiring work on walls, ceilings or the floor. The TROLLEY systems are always ready for use wherever they are required.



### PLUG & PLAY

Quick, inexpensive and simple installation without the need for structural modifications.



### MODULAR FLEXIBILITY

Thanks to their modular design, our devices are easy to upgrade and are compatible with standard hardware and software systems.



### HEIGHT ADJUSTABLE

With ergonomic stainless steel height adjusters, the screen height of selected TROLLEY systems can be adapted.



### VERY EASY TO CLEAN

Easy to clean and resistant to cleaning agents thanks to sophisticated stainless steel construction.



### INDUCTIVE CHARGING

On request, selected TROLLEYS (page 33) can also be equipped with inductive charging technology for a wireless cleanroom.



### POWERFUL BATTERIES

Choose between low-cost AGM batteries or extremely durable lithium ion batteries (LiFePO4) in the TROLLEY base.

A comparison of all battery versions can be found by scanning the QR code or at [systec-solutions.com/en/batteries](https://systec-solutions.com/en/batteries)



TROLLEY SLIM (page 24)



TROLLEY LIGHT 3-star (page 26)



TROLLEY LIGHT trapezoid (page 28)



TROLLEY LIGHT 5-star (page 31)



TROLLEY COMPACT (page 35)



TROLLEY MAXI (page 37)

## COMPATIBLE WITH

- WAVE (page 15)
- PILOT (page 17)
- Keyboards (page 54)
- Accessories (page 56)

## TECHNICAL DATA



For more information,  
scan the QR code or visit  
[systec-solutions.com/en/  
trolleys](http://systec-solutions.com/en/trolleys)

# TROLLEY SLIM

## WORK FLEXIBLY, ERGONOMICALLY AND COST-EFFECTIVELY – EXCEPTIONALLY LIGHTWEIGHT WORKSTATION FOR CLEANROOMS

The TROLLEY SLIM is a lightweight and compact mobile solution with no integrated battery. It can be combined with either a stainless steel tablet or an HMI system, to which a keyboard can be added on request. Two different roller options allow you to design it to suit your intended use. Equipped with guide castors, the system boasts complete mobility. Rollers make the TROLLEY SLIM a flexible stand and allow it to be moved when needed. Regardless of the version. The TROLLEY SLIM is ideally suited to GMP conditions and cleanrooms.



### PLUG & PLAY

Quick, inexpensive and simple installation without the need for structural modifications.



### EXTREMELY LIGHT TROLLEY

Its slim design makes the TROLLEY SLIM exceptionally easy to move.



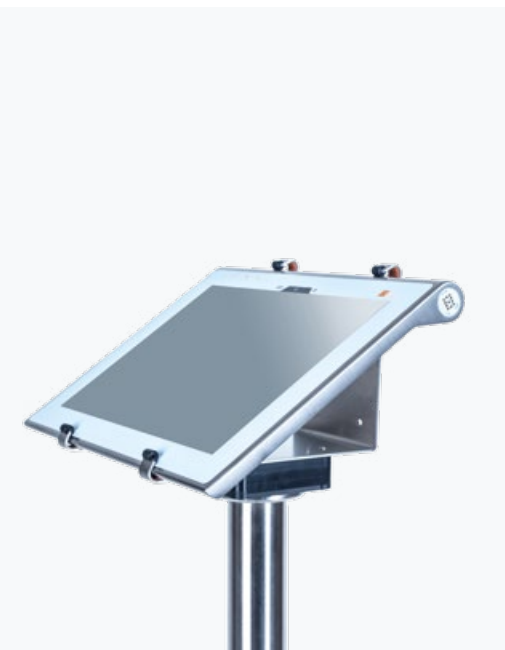
### VERY EASY TO CLEAN

Easy to clean and resistant to cleaning agents due to sophisticated design in stainless steel with IP65 protection.



### ESPECIALLY COST-EFFECTIVE

The entry-level model for price-sensitive projects with demanding hygienic requirements.



TROLLEY SLIM combined with a stainless steel tablet (page 50)



TROLLEY SLIM combined with the WAVE (page 15) or PILOT (page 17) HMI system

### COMPATIBLE WITH

- WAVE (page 15)
- PILOT (page 17)
- Keyboards (page 54)
- Tablets (page 50)

### TECHNICAL DATA



For more information, scan the QR code or visit [systec-solutions.com/en/trolley-slim](https://systec-solutions.com/en/trolley-slim)



TROLLEY SLIM as a mobile stand. Guide castors enable mobile use.



Multi-touch display can be operated with gloves



TROLLEY SLIM as a flexible stand. Rollers allow easy movement as required.

# TROLLEY LIGHT 3-STAR

## LIGHTWEIGHT CLEANROOM OPERATING STATION WITH INTEGRATED BATTERY FOR FLEXIBLE MOVEMENT

The TROLLEY LIGHT with 3-star base is the most compact, lightweight and mobile version of the TROLLEY LIGHT. An integrated battery makes it possible to work in places with no direct power supply. The system can be moved around as required without having to shut down the HMI. The battery also protects against any faults occurring in the power network as the power supply to the HMI system is guaranteed at all times. This increases reliability and prevents data loss. It is operated with a keyboard or alternatively using the touch display, similar to a large tablet.



### PLUG & PLAY

Quick, inexpensive and simple installation without the need for structural modifications.



### EXTREMELY LIGHT BATTERY POWERED TROLLEY

The lightweight design with integrated long-lasting lithium ion battery allows full mobility.



### VERY EASY TO CLEAN

Easy to clean and resistant to cleaning agents due to sophisticated design in stainless steel with IP65 protection.



Antistatic rollers in stainless steel housing



Stainless steel cover caps for interfaces (optional)

### COMPATIBLE WITH

- WAVE (page 15)
- PILOT (page 17)
- Keyboards (page 54)
- Accessories (page 56)

### TECHNICAL DATA



For more information, scan the QR code or visit [systec-solutions.com/en/trolley-light](https://systec-solutions.com/en/trolley-light)

TROLLEY LIGHT 3-star as half-height version with 60° tilted touch display





# TROLLEY LIGHT TRAPEZOID

## MOBILE, SPACE-SAVING WORKSTATION WITH POWERFUL BATTERY FOR CLEANROOM APPLICATIONS

Space-saving and stable: The TROLLEY LIGHT with trapezoid stand. With a platform diameter of just around 55 cm, this is perfect for use in confined spaces. The TROLLEY LIGHT can be pushed right up against the wall. Thanks to its relatively lightweight design, the TROLLEY LIGHT is particularly easy to move. The fully encapsulated, sophisticated stainless steel construction complying with protection class IP65 considerably reduces the amount of cleaning work. The TROLLEY screen height can be ergonomically adjusted with an optional stainless steel height adjuster.



### PLUG & PLAY

Quick, inexpensive and simple installation without the need for structural modifications.



### BATTERY FOR MULTIPLE SHIFTS

Choose between low-cost AGM batteries or extremely long life lithium ion batteries (LiFePO4).



### VERY EASY TO CLEAN

Easy to clean and resistant to cleaning agents thanks to sophisticated stainless steel construction.



### EXCEPTIONALLY SPACE-SAVING

The compact base requires little space and can be pushed flat against the wall.



Digital charge-level display and interfaces (optionally with stainless steel cover caps)



Antistatic rollers in stainless steel housing

### COMPATIBLE WITH

- WAVE (page 15)
- PILOT (page 17)
- Keyboards (page 54)
- Accessories (page 56)

### TECHNICAL DATA



For more information, scan the QR code or visit [systec-solutions.com/en/trolley-light](https://systec-solutions.com/en/trolley-light)

TROLLEY LIGHT trapezoid with WAVE, glass keyboard and CONNECT BOX





TROLLEY LIGHT 5-star as dual-display solution



TROLLEY LIGHT 5-star as half-height version with 60° tilted touch display



# TROLLEY LIGHT 5-STAR

## MOBILE AND STABLE CLEANROOM WORKSTATION WITH EXCEPTIONALLY LONG BATTERY OPERATING TIME

Whilst offering full mobility, this base mounted on 5 rollers provides a stable stand ideally suited to a mobile dual-display solution, for example. The TROLLEY LIGHT 5-star can also be configured as a high version in which the display is tilted by 10°. A half-height version with a 60° tilted display is also possible. All options can be supplied with or without a keyboard.



### PLUG & PLAY

Quick, inexpensive and simple installation without the need for structural modifications.



### BATTERY FOR MULTIPLE SHIFTS

Choose between low-cost AGM batteries or extremely long life lithium ion batteries (LiFePO4).



### VERY EASY TO CLEAN

Easy to clean and resistant to cleaning agents thanks to sophisticated stainless steel construction.



### HEIGHT ADJUSTABLE

The TROLLEY screen height can be ergonomically adjusted using ergonomic stainless steel height adjusters (optional).

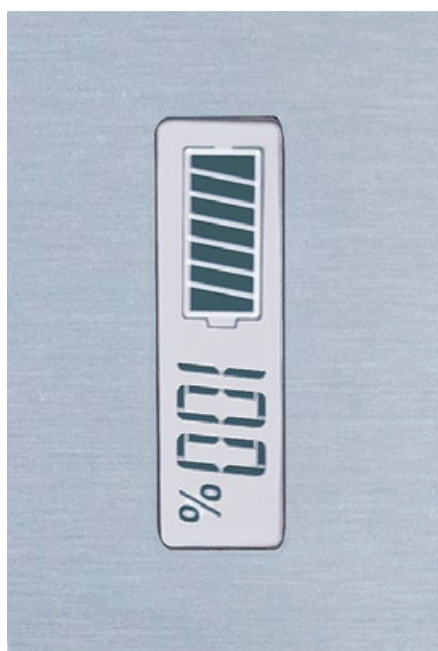
## COMPATIBLE WITH

- WAVE (page 15)
- PILOT (page 17)
- Keyboards (page 54)
- Accessories (page 56)

## TECHNICAL DATA



For more information, scan the QR code or visit [systec-solutions.com/en/trolley-light](https://systec-solutions.com/en/trolley-light)



Digital charge level indicator



A wide range of configurations are possible, e.g. TROLLEY LIGHT 5-star as a high version

TROLLEY LIGHT Inductive with two couplers for double charging speed



Magnets center the TROLLEY on the charging station



Charging begins when docking to the station

# TROLLEY LIGHT INDUCTIVE

## COMPACT STAND WITH INDUCTIVE CHARGING TECHNOLOGY FOR A WIRELESS CLEANROOM

Maximum mobility and wireless power transmission to prevent cross-contamination by cables and plug contacts - the TROLLEY LIGHT with inductive battery charging technology. For the charging process, the TROLLEY stand is magnetically docked on the charging station, and charging starts automatically. Inductive charging stations distributed around the room enable simultaneous working and charging at different locations. The system is thus always ready for use.



### FASTER CHARGING THAN USING CABLE

A second coupler charges the battery more quickly than conventional charging technology.



### FULL MOBILITY

Full mobility thanks to rollers, integrated wifi and high-power batteries.



### VERY EASY TO CLEAN

Easy to clean and resistant to cleaning agents due to sophisticated design in stainless steel with IP65 protection.

## MODEL VERSIONS

Available for

- TROLLEY LIGHT trapezoid (page 28)
- TROLLEY LIGHT 5-star (page 31)

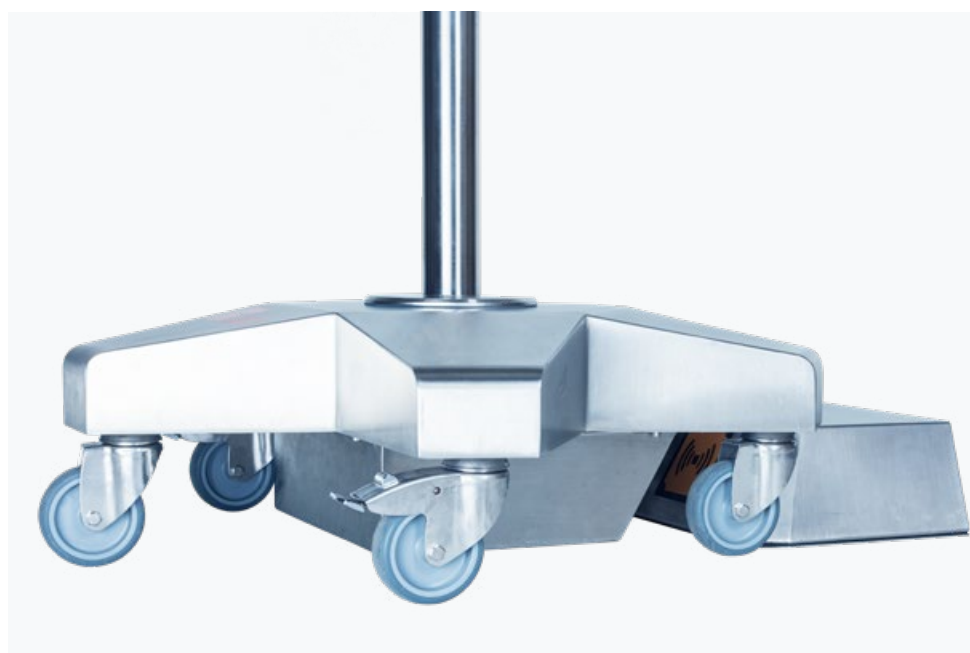
## COMPATIBLE WITH

- WAVE (page 15)
- PILOT (page 17)
- Keyboards (page 54)
- Accessories (page 56)

## TECHNICAL DATA



For more information,  
scan the QR code or visit  
[systec-solutions.com/en/  
trolley-light-inductive](https://systec-solutions.com/en/trolley-light-inductive)



Inductive charging technology for the TROLLEY LIGHT 5-star. For charging, the system is docked with the floor station



TROLLEY COMPACT - Mobile cleanroom workstation with HMI system, keyboard and printer



# TROLLEY COMPACT

## READY-TO-CONNECT OPERATING STATION FOR CLEANROOMS - HMI SYSTEM, KEYBOARD AND PRINTER IN ONE

The TROLLEY COMPACT workstation is the ideal complete system for confined spaces in cleanrooms. It is built with a hygienic design and has special double seals, fasteners and internal hinges. The TROLLEY COMPACT is equipped with an HMI system, an integrated keyboard and a stable mobile stand. There is also a drawer for documents and space to accommodate a label printer. The labels can be simply removed using the printer flap on the side. Thanks to integrated wifi and battery, it can be fully mobile over the entire working day.



### PLUG & PLAY

Quick, inexpensive and simple installation without the need for structural modifications.



### BATTERY FOR MULTIPLE SHIFTS

Choose between low-cost AGM batteries or extremely long life lithium ion batteries (LiFePO4).



### VERY EASY TO CLEAN

Easy to clean and resistant to cleaning agents due to sophisticated design in stainless steel with IP65 protection.



### SPACE FOR PRINTER AND DOCUMENTS

Documents and a label printer can be stored in the drawer (page 60).

## COMPATIBLE WITH

- WAVE (page 15)
- PILOT (page 17)
- Keyboards (page 54)
- Accessories (page 56)
- Printer (page 60)

## TECHNICAL DATA



For more information,  
scan the QR code or visit  
[systec-solutions.com/en/  
trolley-compact](https://systec-solutions.com/en/trolley-compact)



Printer flap mounted on the side for convenient removal of labels



TROLLEY MAXI - Cleanroom workstation with HMI system, integrated keyboard, drawer and space for a label printer



## COMPATIBLE WITH

- WAVE (page 15)
- PILOT (page 17)
- Keyboards (page 54)
- Accessories (page 56)
- Printer (page 60)

## TECHNICAL DATA



For more information,  
scan the QR code or visit  
[systec-solutions.com/en/  
trolley-maxi](https://systec-solutions.com/en/trolley-maxi)



# TROLLEY MAXI

## CLEANROOM OPERATING STATION FEATURING HYGIENIC DESIGN - CUSTOMIZABLE CONFIGURATION AND READY TO USE

The TROLLEY MAXI is a complete cleanroom system conforming to protection class IP65 and has been constructed in accordance with hygienic design principles with special double seals, fasteners and internal hinges. It can be used as a stationary or mobile complete system. The TROLLEY MAXI is equipped with an HMI system, an integrated keyboard and a drawer, as well as space for a label printer. The connector plate on the back facilitates the installation of peripherals (e.g. scales) on site, thus saving both time and installation expense.



### VERY EASY TO CLEAN

Easy to clean and resistant to cleaning agents due to sophisticated design in stainless steel with IP65 protection.



### SPACE FOR PRINTER AND DOCUMENTS

Equipped with a drawer for documents and space to integrate a printer (page 60).



### PLUG & PLAY

The workstation is supplied ready for connection and ready to use.



The labels can be removed using the door with viewing window.



The interior is prepared for installation of a printer



Also suitable for mobile applications



LIFE  
SCIENCE  
READY®

# ENDPOINT / THIN CLIENT SYSTEMS

## EASY AND CENTRAL REMOTE ADMINISTRATION - LOW-COST AND LOW-MAINTENANCE

The Endpoint/Thinclient solution based on software (IGEL OS, ThinManager, etc.) is a fully-fledged alternative to classic Thin-client hardware. A powerful, software-based and general-purpose thin client for secure and reliable access to a wide range of IT infrastructures. It provides powerful graphical capabilities for connecting to Server Systems such as Microsoft TSE (RDP, ICA protocol and VDI), VNC and depending on the Endpoint/Thinclient solution many other protocols. USB devices such as keyboard, mouse, scanner and touch screens are supported. The use of WLAN, Bluetooth, RFID, NFC, smart card readers, audio, etc. is also possible by selecting the appropriate Endpoint/Thinclient Software.



### NO LOCAL SOFTWARE AND MAINTENANCE NECESSARY

Ready for use in just a few clicks.  
Central remote maintenance by IT is possible.



### PLUG & PLAY

Secure plug-and-play connection via Ethernet / RJ45 to server / PC.



### EXCEPTIONALLY COST-EFFECTIVE

Less expensive than conventional KVM solutions, thin clients, or PCs.

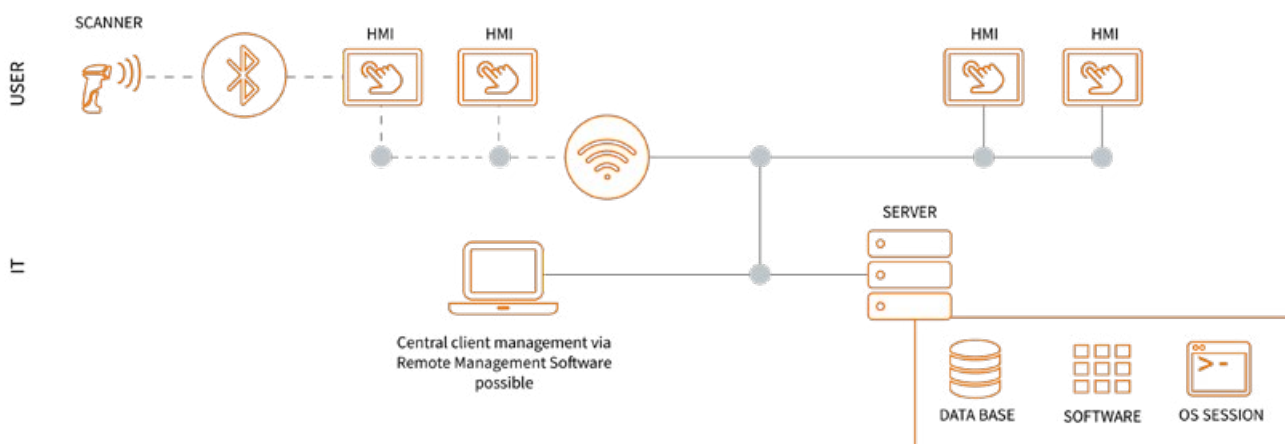


Figure shows the example IGEL OS

### TECHNOLOGIES



### COMPATIBLE WITH

- WAVE (page 15)
- PILOT (page 17)
- CONTROL (page 43)

### MORE INFORMATION



For more information, scan the QR code or visit [systemec-solutions.com/en/client-systems](https://systemec-solutions.com/en/client-systems)



# INTEGRAL DISPLAYS

**LIFE  
SCIENCE  
READY**

For the highest  
demands



Can be operated  
with gloves



Easy to clean and  
resistant



Exceptionally  
space-saving

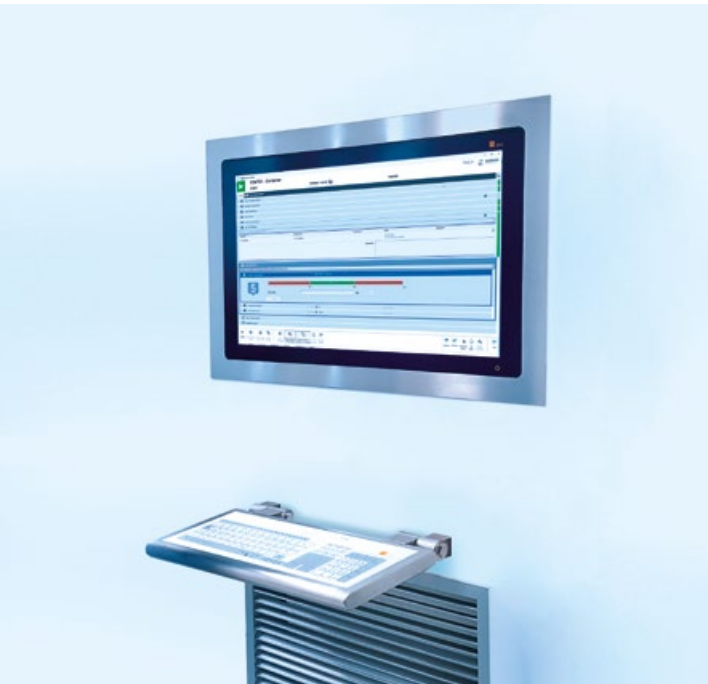


IP65  
on the front





CONTROL flush-mounted in cleanroom wall



CONTROL with stainless steel frame - installation on the rear. Ideal in combination with a keyboard for wall mounting



Easy Click Magnetic Mount for easiest installation and removal



# CONTROL

## INTEGRAL PANEL FOR OPTIMIZED INTEGRATION INTO WALLS IN CLEANROOMS AND GMP ENVIRONMENTS

The CONTROL HMI system is a space-saving and easy to clean solution. It is notable for its shallow installation depth. Every installation version conforms to IP65 on the front. The display provides high color accuracy, distinct color presentation and extremely low dependency on viewing angles. It provides an ideal display for MES software, ERP and process control systems. An optional IP65 stainless steel protective liner, which is installed between the display and the wall, can be added. This retains the cleanroom status once the panel has been removed.



### IDEAL FOR CONFINED SPACES

Low installation depth and flat installation provide full functionality with minimum space requirements.



### INTUITIVE MULTI-TOUCH DISPLAY

The IPS LCD display with optical bonding can be operated with standard cleanroom gloves.



### NUMEROUS INSTALLATION OPTIONS

Can be integrated into walls, machines or switch cabinets from the front or rear.

### MODEL VERSIONS

- Available as 17", 21", 24" and 32"
- Configurable as PC, thin client (page 39) or monitor

### COMPATIBLE WITH

- Keyboards (page 54)
- Accessories (page 56)
- Authentication (page 58)



### TECHNICAL DATA



For more information,  
scan the QR code or visit  
[systec-solutions.com/en/  
control](https://systec-solutions.com/en/control)

## EASY CLICK MAGNETIC MOUNT

Easy, fast & save! The magnetic mount of the HMI system offers outstanding advantages during assembly.

**NEW!**

### BASE | FLUSH MOUNTING

Particularly easy to clean. Meets IP65<sup>1</sup> on the front.

### OPTION 1 | FRONTFRAME<sup>2</sup>

Particularly flexible mounting and very easy to clean. Meets IP65<sup>1</sup> on the front.

### OPTION 2 | PROTECTIVE ENCLOSURE

Provides optimal cable management and also maintains cleanroom status at the rear. Requires rear access during assembly. Meets IP65<sup>1</sup> on the front.

<sup>1</sup> with proper sealing.

<sup>2</sup> A frontframe may be necessary due to the specified circumstances. We will be pleased to advise you..

# SMALL-FORMAT DISPLAYS

**LIFE  
SCIENCE  
READY**

For the highest  
demands



Can be operated  
with gloves



Easy to clean and  
resistant



Exceptionally  
space-saving



IP65  
on the front







Flush-mounted MODI



Stainless steel housing for wall mounting



Easy Click Magnetic Mount for easy installation and removal

# MODI

## THE IOT HMI SYSTEM FOR ROOM INFORMATION DISPLAY/BUILDING AUTOMATION IN GMP ENVIRONMENTS

All information about the room and production status in digital form at a glance – that is what the intelligent, energy-efficient, network-capable MODI IoT HMI system offers. It is also ideal as a GMP-compliant panel for building automation. It can be incorporated into a network via Ethernet or wifi. The required display data can thus be displayed directly on the MODI from the network, using a browser or your own applications. Power supply with integrated power supply unit or PoE (Power over Ethernet).



### MAGNETIC INSTALLATION METHOD

Specially developed magnetic installation method makes installation and removal very easy.



### VERY EASY TO CLEAN

Flush-mounted installation or with stainless steel frame, the system is easy to clean and IP65 on the front.



### INTUITIVE MULTI-TOUCH DISPLAY

The IPS LCD display with optical bonding can be operated with standard cleanroom gloves.

### MODEL VERSIONS

- Available in 7" and 10"
- Configurable as IoT PC, remote display or monitor

### COMPATIBLE WITH



### TECHNICAL DATA



For more information,  
scan the QR code or visit  
[systec-solutions.com/en/  
modi](https://systec-solutions.com/en/modi)

## EASY CLICK MAGNETIC MOUNT

Easy, fast & save! The magnetic mount of the HMI system offers outstanding advantages during assembly.

### INSTALLATION

1. Install the installation frame in the wall
2. Connect the connecting cable
3. Insert MODI - The MODI is automatically fixed in the correct position by magnets
4. Seal with silicone

### REMOVAL

1. Remove silicone joints
2. Pick up the MODI with a suction cup and release from the magnetic holders
3. Disconnect the cable

# CLEANROOM TABLETS

**LIFE  
SCIENCE  
READY**

For the highest  
demands



Can be operated  
with gloves



Easy to clean and  
resistant



Full  
mobility



Accessories for  
ergonomic use

**LIFE  
SCIENCE  
READY®**











# CLEANROOM TABLETS

## GMP CLEANROOM TABLET - MOBILE WORK WITH A TABLET IN STAINLESS STEEL HOUSING

All tablets are equipped with an IP65 On/Off button and volume buttons, as well as a protective glass panel that protects the multi-touch display. The flush-mounted CLEANROOM CONNECTOR is an easy to clean IP65 magnetic charging contact, which enables cleanroom-compliant charging using a special USB-C cable. As an option, this can also be used as a USB-A socket using a data cable, e.g. to connect a USB stick or Ethernet adapter.

The Zebra industrial tablet is also characterized by a stainless steel 1.4404 housing and additional operating system options. The sensitivity of the touch display can be adapted to suit specific requirements.

### MODEL VERSIONS

- Tablet with Microsoft Surface Pro (12.3")
- Tablet with Apple iPad Pro (11")
- Industrial tablet with Zebra ET51 (10.1")

### COMPATIBLE WITH

- TROLLEY SLIM (page 24)

### TECHNICAL DATA

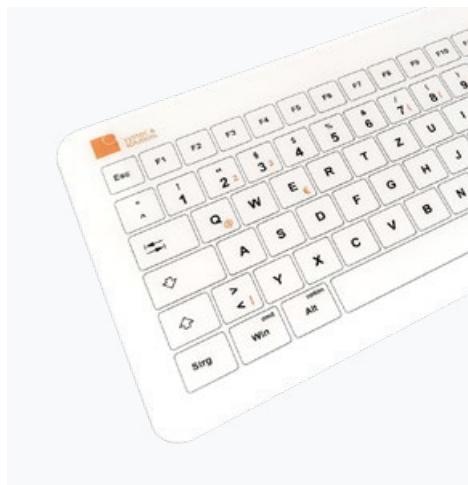


For more information,  
scan the QR code or visit  
[systec-solutions.com/en/  
tablets](https://systec-solutions.com/en/tablets)

CLEANROOM CONNECTOR for cleanroom-compliant charging and data transmission



Easy to clean MEDICAL KEYBOARD for the medical surrounding (optional)



Apple iPad Pro with integrated camera (optional)



Optional stainless steel holder with Vesa hole pattern (75x75 mm) for attachment to support arm systems, on a bench or on the wall. A screen inclination of approx. 30° or approx. 60° is possible.



Stainless steel handle for improved ergonomics (optional)



Power supply in IP65 stainless steel box (optional)



### VERY EASY TO CLEAN

Easy to clean and resistant to cleaning agents thanks to sophisticated stainless steel construction.



### CLEANROOM CONNECTOR

Flush-mounted IP65 magnetic charging contact and for cleanroom-compliant charging and data transmission.



### COMPLETELY MOBILE WORKING

For use anywhere at any time. Users can move freely thanks to the handy size, wifi and battery.



### INTUITIVE OPERATION

Easy to operate using the capacitive multi-touch display with cleanroom gloves or a cleanroom touch pen.



# ADD-ONS

**LIFE  
SCIENCE  
READY**

For the highest  
demands



Modular  
combination



Ergonomic  
design



LIFE  
SCIENCE  
READY®





# CLEANROOM KEYBOARDS

## GMP-COMPLIANT KEYBOARDS WITH GLASS OR MEMBRANE SURFACE - IDEAL FOR CLEANROOMS

The glass and membrane keyboards have been developed specially for cleanroom applications - both are provided with exceptionally smooth and easy to clean surfaces. The glass surface is particularly durable thanks to printing on the rear, while the membrane surface is suitable for sensitive areas in which glass could pose a risk.

They are designed to withstand regular cleaning using the standard cleaning agents and disinfectants used in cleanrooms. The cables run internally due to installation using a torque hinge. Glass keyboards operate on the capacitive principle with acoustic feedback. The short-stroke keys of the membrane keyboard can be operated with tactile feedback.



### VERY EASY TO CLEAN

Easy to clean and resistant to cleaning agents thanks to sophisticated stainless steel construction.



### CAN BE OPERATED WITH GLOVES

Can be operated with up to three layers of cleanroom gloves.



### EXCEPTIONALLY ERGONOMIC

Ergonomic adjustment of the inclination angle to the user is possible.



Glass keyboard



Membrane keyboard



Keyboards can be integrated depending on model



Easy to clean MEDICAL KEYBOARD for the medical surrounding



Secure authentication using RFID and Nymi Band (page 58)



Double torque hinge for wall or cabinet installation



Freely adjustable inclination

## MODEL VERSIONS

- Available as a bench, support and integral version
- Different language layouts can be selected.

## COMPATIBLE WITH

- WAVE (page 15)
- PILOT (page 17)
- CONTROL (page 43)
- TROLLEY (page 22)
- Desktop solutions (page 21)

## TECHNICAL DATA



For more information,  
scan the QR code or visit  
[systemec-solutions.com/en/  
keyboards](https://systemec-solutions.com/en/keyboards)

# ACCESSORIES FOR HMI SYSTEMS

## COMPREHENSIVE SELECTION OF CLEANROOM COMPLIANT ACCESSORIES - SUITABLE FOR EVERY REQUIREMENT

We can offer additional practical accessories for our systems to ensure easy and ergonomic everyday working for users. They enable the HMI systems to be tailored precisely to specific work processes and production environments.

All components have been developed and optimized specially for use in cleanrooms. They are made entirely of stainless steel and cleanroom-compatible materials. The accessories can be seamlessly combined with the HMI systems.

Cable manager



Handle



IP65 stainless steel touch pen with interchangeable tip



Touch pen attached to the HMI system with stainless steel holder and sheathed stainless steel cable

Speaker



Wifi antenna



Tilting keyboard shelf  
with magnetic keyboard



Scanner fork for secure storage of  
Bluetooth or wired scanners



Scanner cradle mount - power supply  
from HMI system via internal cable



Various controls and/or emergency  
stop buttons can be added

## FURTHER ACCESSORIES



Further accessories are available  
by scanning the QR code or at  
[systemec-solutions.com/en/  
accessories](https://systemec-solutions.com/en/accessories)





# AUTHENTICATION

## SECURE AND EASY AUTHENTICATION IN SECONDS

Regular logins, confirmations or electronic signatures in accordance with 21 CFR Part 11 take up a lot of time and can become a security risk. Electronic or biometric authentication solutions, employing an RFID card or Nymi Band for example, allow more efficient and secure working. User authentication then takes

a matter of seconds, reduces the risk of incorrect entries, and saves a significant amount of time. The CONNECT BOX acts as an interface for authentication and can be flexibly positioned. All the solutions conform to IP65 and have been developed specially for cleanroom applications.

### MODEL VERSIONS

- Available as bench, attachment and integral version
- Can be integrated into keyboards or HMI systems

### COMPATIBLE WITH

- WAVE (page 15)
- PILOT (page 17)
- CONTROL (page 43)
- MODI (page 47)
- Keyboards (page 54)

### TECHNICAL DATA

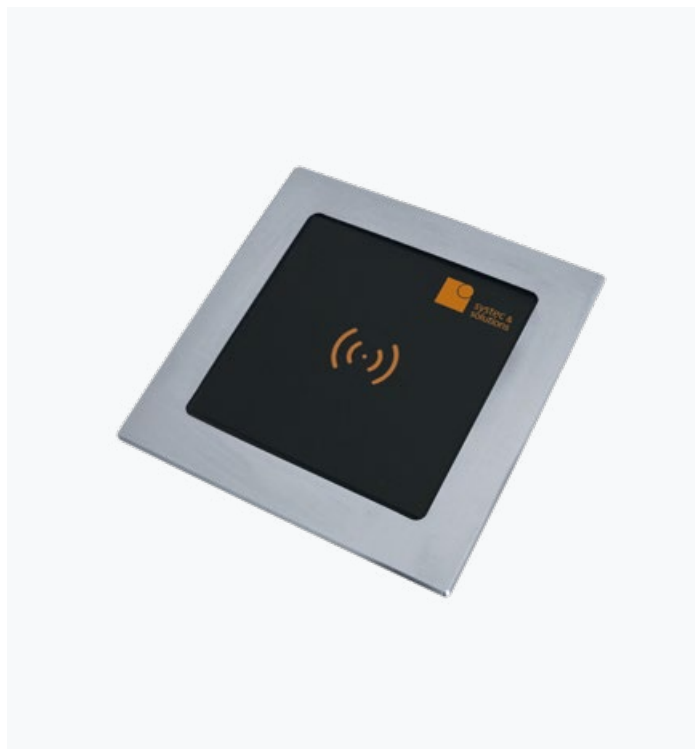


For more information, scan the QR code or visit [systec-solutions.com/en/authentication](https://systec-solutions.com/en/authentication)

Authentication using CONNECT BOX DESKTOP



Authentication using CONNECT BOX FM as wall installation



Authentication on HMI system using  
CONNECT BOX



Authentication using RFID on PILOT  
(optional)



NYMI Band Gen 3



## COMPATIBLE WITH NYMI

Nymi is a leading company for biometric security. The authentication solution provides data integrity and security that enable the highly regulated industry to ensure compliance and productivity.



# SCANNERS & PRINTERS

## COMPLETE YOUR CLEANROOM SYSTEM

Choose from 1D and 2D scanners and label printers for thermal transfer printing. The scanners feature Bluetooth interfaces and have high performance batteries to ensure a long mobile operating time. With the printers, high speeds ensure a fast label throughput, high resolution at up to 600 dpi. The printers can be easily integrated into existing printing solutions and are very user friendly. The various devices can be integrated or extended with stainless steel housings and suitable accessories according to your requirements.

1. Zebra CS60-HC - Works perfectly with our tablets (page 50)
2. PowerScan PM9501 / PBT9501 - Works perfectly with our HMI systems (from page 15) and TROLLEYS (from page 22)
3. PowerScan PD9531 - Works perfectly with our HMI systems (from page 15) and TROLLEYS (from page 22)
4. Zebra DS3678 - Works perfectly with our HMI systems (from page 15) and TROLLEYS (from page 22)
5. Zebra DS3608 - Works perfectly with our HMI systems (from page 15) and TROLLEYS (from page 22)
6. Zebra ZD620t-HC - Works perfectly with the TROLLEY COMPACT (page 35) or Printer Box S (page 62)
7. Zebra ZT220 - Works perfectly with the TROLLEY MAXI (page 37) or PRINTER BOX M (page 62)
8. Zebra ZT411 - Works perfectly with the TROLLEY MAXI (page 37) or PRINTER BOX M (page 62)
9. CAB XC6 - Works perfectly with the TROLLEY MAXI (page 37) or PRINTER BOX L (page 62)



Selection - Other models on request



1



2



3



4



5



6



7



8



9

## TECHNICAL DATA



For more information,  
scan the QR code or visit  
[systec-solutions.com/en/  
scanners-printers](https://systec-solutions.com/en/scanners-printers)

# PRINTER BOX

## CLEANROOM-COMPLIANT INTEGRATION OF PRINTERS IN IP65 STAINLESS STEEL HOUSING

This enables printers of almost any size to be installed in a sterile environment in the PRINTER BOX whilst satisfying GMP requirements. The box is based on hygienic design principles and satisfies the highest hygiene standards thanks to the use of special double seals, fasteners and internal hinges. The printed labels can be removed using a small door with viewing window.

The printer is placed on a pull-out platform and is connected up inside the PRINTER BOX. Connections for power, USB or Ethernet on the rear allow flexible use of the PRINTER BOX.

All our stainless steel printer housings can be placed or screwed onto a shelf or integrated into a wall.



PRINTER BOX in hygienic design, integral version



### PRINTER BOX MODEL VERSIONS

- Option S (W 360 / H 320 / D 445, approx. 18 kg without configurations)
- Option M (W 400 / H 400 / D 650, approx. 28 kg without configurations)
- Option L (W 450 / H 540 / D 630, approx. 41.5 kg without configurations)

### COMPATIBLE WITH

- Printer (page 60)

### TECHNICAL DATA



For more information,  
scan the QR code or visit  
[systec-solutions.com/en/  
boxes](https://systec-solutions.com/en/boxes)

# SCANNER BOX

## CLEANROOM-COMPLIANT INTEGRATION OF SCANNER CHARGERS IN IP65 STAINLESS STEEL HOUSING

Up to four scanner stations or two multi-charging stations can be safely and conveniently accommodated in the SCANNER BOX. It is exceptionally easy to clean and conforms to IP65. The charge level can be checked using the viewing window in the door of the SCANNER BOX. Once charging has been completed, the door can be opened and closed using a toggle lock.

Inside there is a partition forming a compartment for the power supply units, the cables of which are safely routed through an IP65 opening. The rear panel is screwed on and can be detached for service purposes. The SCANNER BOX is supplied with charging stations and power supply units pre-installed.

All our stainless steel printer housings can be placed or screwed onto a shelf or integrated into a wall.



Scanner box with space for up to four scanners or two multi-charging stations

### SCANNER BOX MODEL VERSIONS

- Option (W 470 / H 260 / D 265, approx. 22 kg without configurations)

### COMPATIBLE WITH

- Scanner (page 60)

### TECHNICAL DATA



For more information,  
scan the QR code or visit  
[systec-solutions.com/en/  
boxes](https://systec-solutions.com/en/boxes)



# EX SOLUTIONS



For potentially  
explosive  
environments



Can be operated  
with gloves



Easy to clean and  
resistant

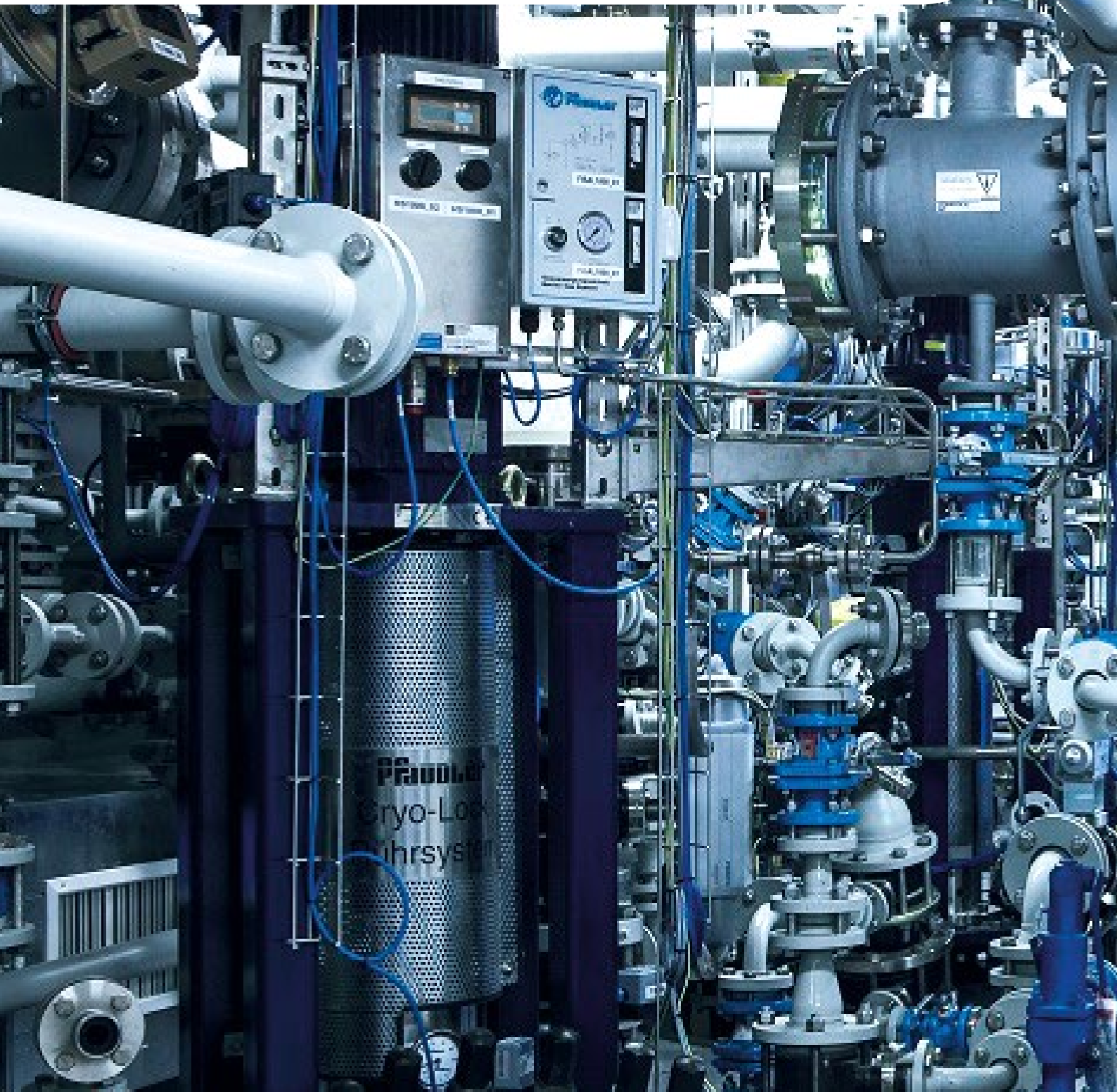


IP66

Protection class  
IP66



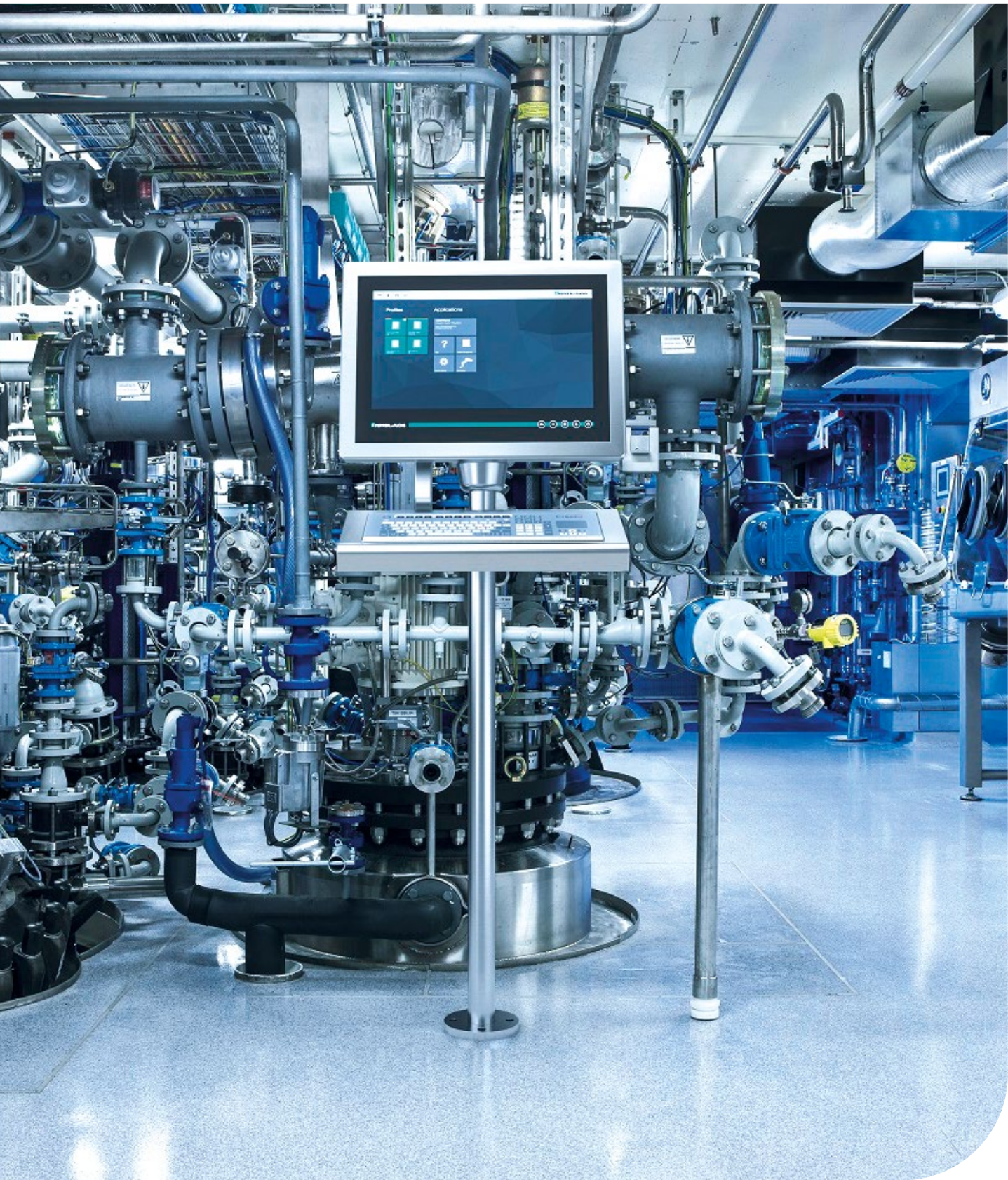
Modular  
design







VisuNet GXP RM with keyboard





# EX COMPLIANT HMI SYSTEMS

## FOR GREATER SAFETY IN POTENTIALLY EXPLOSIVE ATMOSPHERES

Because safety has the highest priority in potentially explosive atmospheres, we offer selected HMI systems for EX areas of zones 1+21 and 2+22.

The HMI systems are available as a remote monitor or panel PC. As an option, they can be supplemented with a keyboard featuring ergonomic finger placement. The capacitive touch screen with TFT display enables decentralized information to be displayed and processing directly on site during the process.

Other selected Atex products are available on request.



### **MULTI-TOUCH DISPLAY**

Easy to operate using the capacitive multi-touch display or a keyboard with touch pad or trackball.



### **FULLY ENCAPSULATED STAINLESS STEEL HOUSING**

Reduces cleaning work and complies with protection class IP66.



### **FOR EXPLOSIVE AREAS**

Suitable for use in Zone 1+21/ Class I, Div 2 and 2+22, depending on model.

## MODEL VERSIONS

- Available in 19" and 21.5"
- Configurable as remote monitor or panel PC

## TECHNICAL DATA



For more information, scan the QR code or visit [systec-solutions.com/en/ex-systems](https://systec-solutions.com/en/ex-systems)

# INDEX

## A

Accessories	56
AGM battery	22
Android	47
Apple iPad	50
ATEX systems	67
Authentication	58

## B

Battery operated	22
Bench mounting	21
Biometric	10
Floor mounting	18

## C

Ceiling mounting	18
Cleanroom connector	8
Cleanroom keyboard	54
Cleanroom tablet	50
CONNECT BOX	58
Consultation	3
Controls	17
Cosmetics	5

## D

Desktop keyboard	54
Desktop workstation	21

## E

Easy Click Magnetic Mount	47
Endpoint	39
Emergency stop	17

## F

FDA	3
Flush-mounted	43
Flexible stand	24
Food	5

## G

Glass keyboard	54
GMP	3

## H

Height adjustment	22
HMI systems	15, 17
HW-IQ	6

## I

IGEL	39
Inductive charging	33
Industrial tablet	50
Integral keyboard	54
Integral panel	43, 47
IP65	15
IP67	17
ISO 14644	3

## K

Keyboards	54
-----------	----

## L

Linux	47
Lithium ion (LiFePO4)	22
L-tube	18

## M

Membrane keyboard	54
Microsoft Surface	50
Mobile solution	22
Mobile printer solutions	35, 37
Mobile tablet solution	24
Mobile solution without battery	24

## N

NoTouch	39
Nymi	58

## P

PILOT	17
Plug & play	22
PRINTER BOX	62
Printer	60
Power over Ethernet	47

## Q

Qualification	6
---------------	---

## R

RFID interface	58
----------------	----

## S

Scanner	60
SCANNER BOX	63
Scanner holder	56
Service	6
Small display	47
Speaker	56
Stainless steel 1.4404	17
Support arm	18
Switch cabinet installation	43

## T

Tablet	50
Tailored	3
Thin client	39
Thin Manager	39
Touch pen	56
TROLLEY	22

## U

UHD display	15
U-tube	18
URS	6

## V

Visunet	67
---------	----

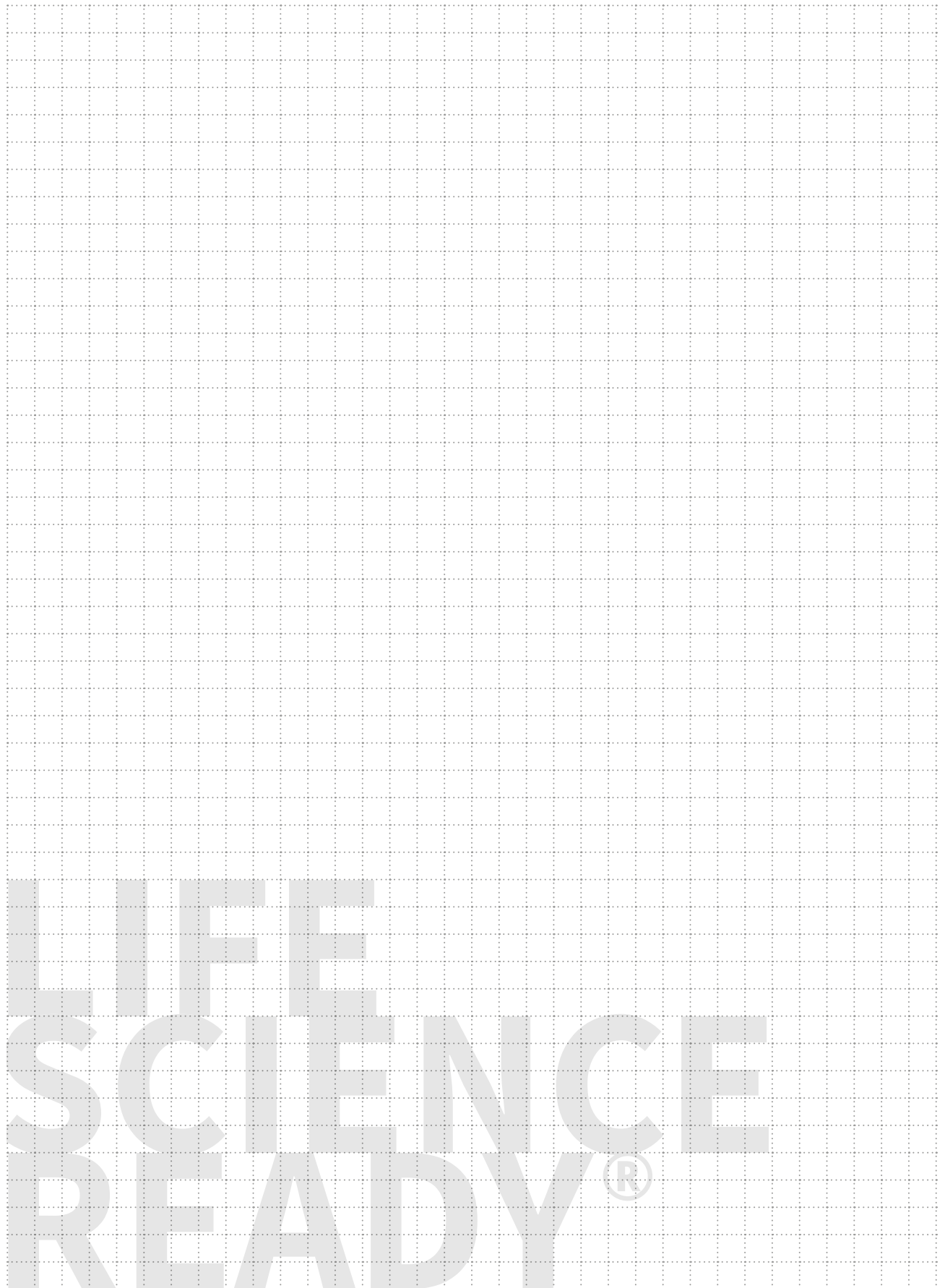
## W

Wall installation	43, 47
Wall mounting	18
WAVE	15

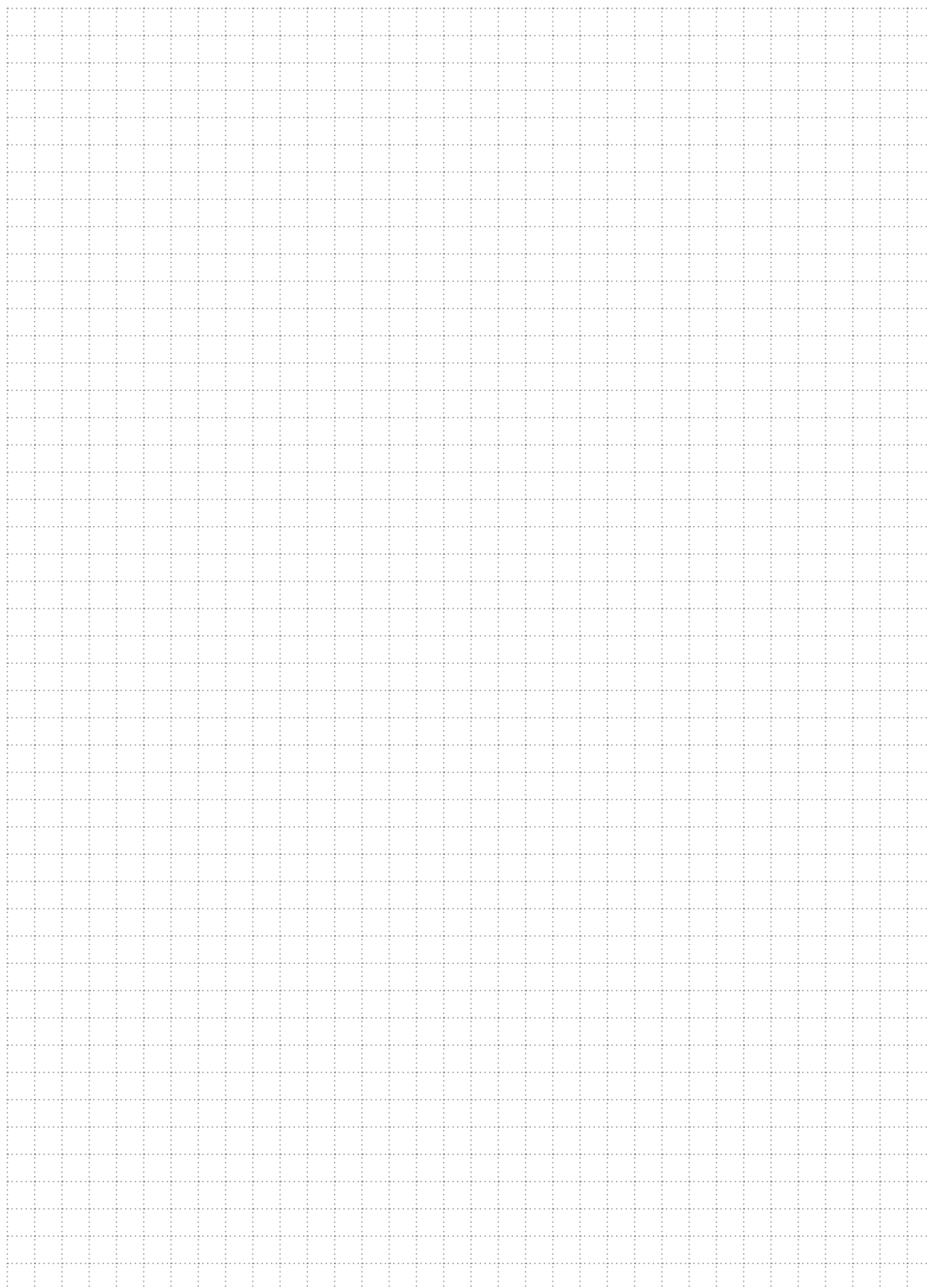








LIFE  
SCIENCE  
READY®



LIFE  
SCIENCE  
READY®

**Systec & Solutions GmbH**  
Wilhelm-Schickard-Str. 9  
76131 Karlsruhe, Germany

Phone: +49 721 66351 0  
[talk@systec-solutions.com](mailto:talk@systec-solutions.com)  
[systec-solutions.com](https://www.systec-solutions.com)

V1 | 05/2022